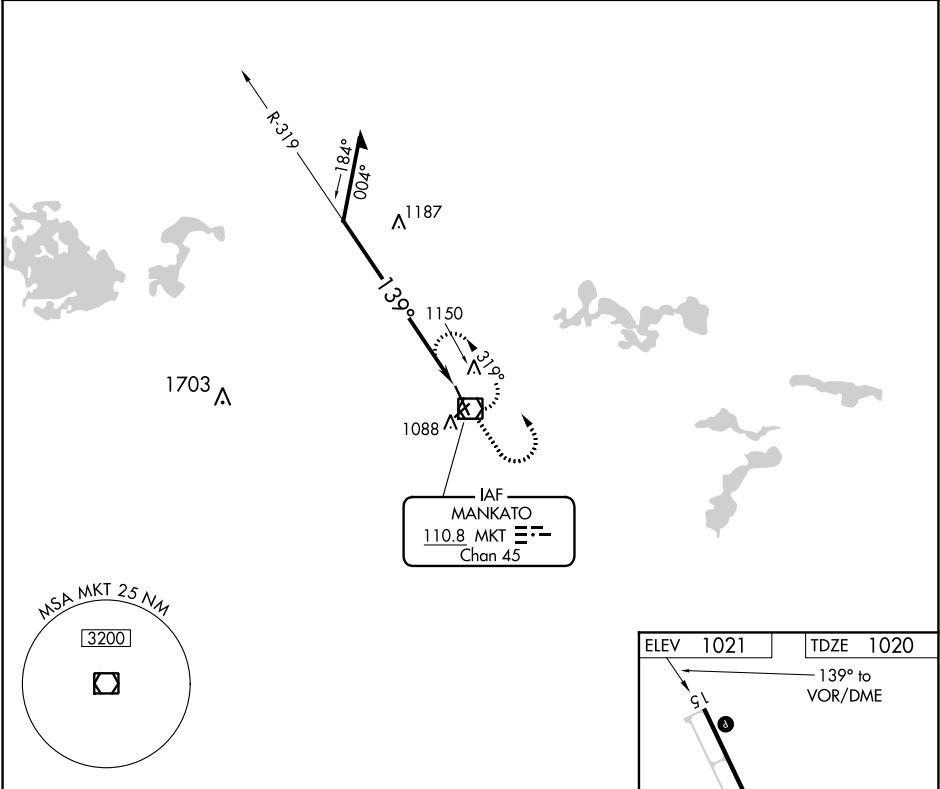


VOR/DME MKT	APP CRS	Rwy Idg	6600
110.8	139°	TDZE	1020
Chan 45		Apt Elev	1021

VOR RWY 15  
MANKATO RGNL (MKT)

<div><div><div></div><div>⚠</div></div><div>When local altimeter setting not received use Waseca altimeter setting and increase all MDAs 60 feet, increase S-15 Cat C and Circling Cat C visibility ½ SM.</div></div>	MISSED APPROACH: Climb to 2000 then climbing left turn to 2700 direct MKT VOR/DME and hold.	
<div><div>AWOS-3PT</div><div>118.175</div></div>	<div><div>MINNEAPOLIS CENTER</div><div>135.0 306.9</div></div>	<div><div>UNICOM</div><div>122.725 (CTAF) 0</div></div>



Remain within 10 NM		MKT VOR/DME		2000	2700	MKT
319°		139°		↑	↩	☐
2700						
CATEGORY	A	B	C	D		
S-15	1600-1	580 (600-1)	1600-1½ 580 (600-1½)	1600-1¾ 580 (600-1¾)		
CIRCLING	1600-1	579 (600-1)	1600-1½ 579 (600-1½)	1600-2 579 (600-2)		

ELEV 1021 TDZE 1020

139° to VOR/DME

6600 X 100

1072

6000 X 75

0.3% UP

33

MIRL Rwy 4-22 0

HIRL Rwy 15-33 0

REIL Rlys 4, 15 and 22 0