
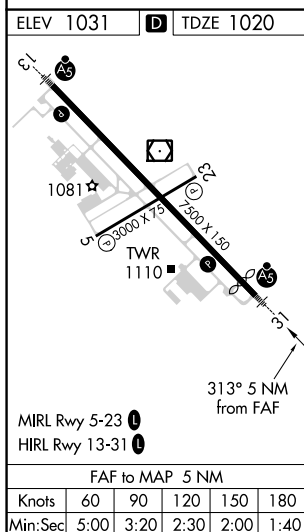
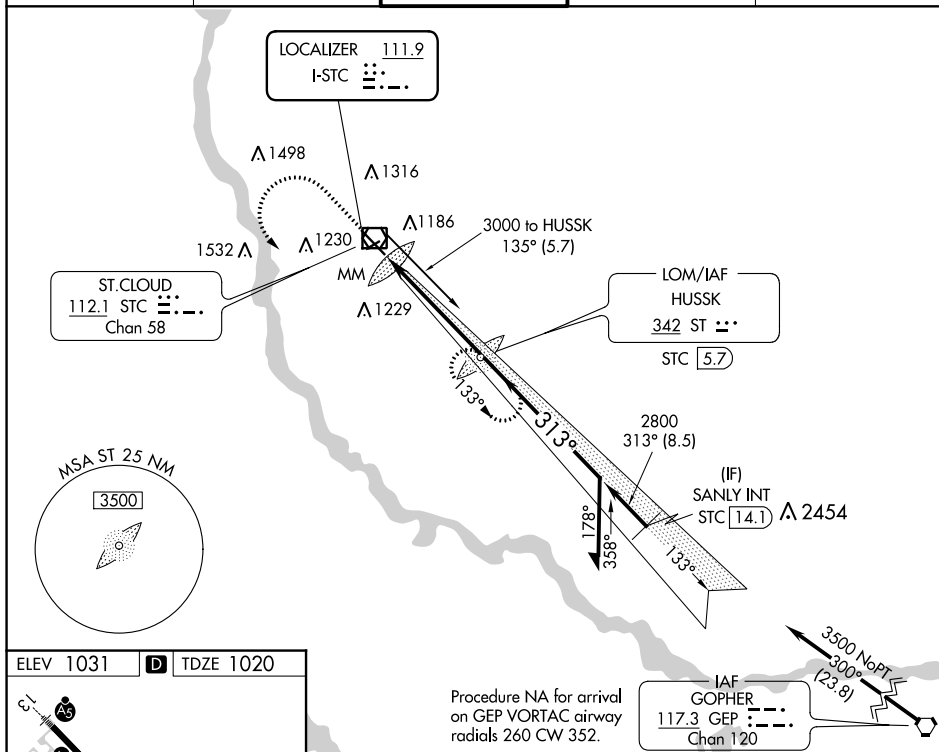


LOC I-STD <b><u>111.9</u></b>	APP CRS <b>313°</b>	Rwy Idg TDZE Apt Elev	<b>7000</b> <b>1020</b> <b>1031</b>
----------------------------------	------------------------	-----------------------------	---

ILS or LOC RWY 31  
ST CLOUD RGNL (STC)

<p><b>T</b> <b>NA</b></p>	<p>VDP NA when using Little Falls altimeter setting. When local altimeter setting not received, use Little Falls altimeter setting and increase all DA 76 feet and all MDA 80 feet and increase S-LOC 31 Cat C/D visibility <math>\frac{1}{8}</math> SM. ADF required.</p>	<p><b>MALSR</b></p> 	<p><b>MISSED APPROACH:</b> Climb to 3000 then left turn direct HUSSK LOM and hold.</p>
-------------------------------	--	---	--

ATIS <b>119.375</b>	MINNEAPOLIS CENTER <b>121.05 397.9</b>	ST. CLOUD TOWER★ <b>118.25 (CTAF) 0</b>	GND CON <b>123.75</b>	UNICOM <b>123.5</b>
------------------------	---	--	--------------------------	------------------------



3000  
↑  
ST  
\*LOC only.

ST LOC  
STC 5.7

VGSi and ILS glidepath not coincident  
(VGSi Angle 3.00/TCH 50).

Remain within 10 NM

3000

133°

313°

2800

GS 3.00°  
TCH 60

2694

MM

\*STC 1.9

STC 0.7

0.5 0.8 NM 3.7 NM

CATEGORY	A	B	C	D
S-ILS 31	1220-1/2		200 (200-1/2)	
S-LOC 31	1480-1/2 460 (500-1/2)		1480-7/8 460 (500-7/8)	
CIRCLING	1500-1 469 (500-1)		1500-1 1/2 469 (500-1 1/2)	1620-2 589 (600-2)