

WAAS CH <b>82013</b> <b>W13A</b>	APP CRS <b>133°</b>	Rwy Idg TDZE <b>1031</b> Apt Elev <b>1031</b>	<b>7500</b>
--	------------------------	---	-------------

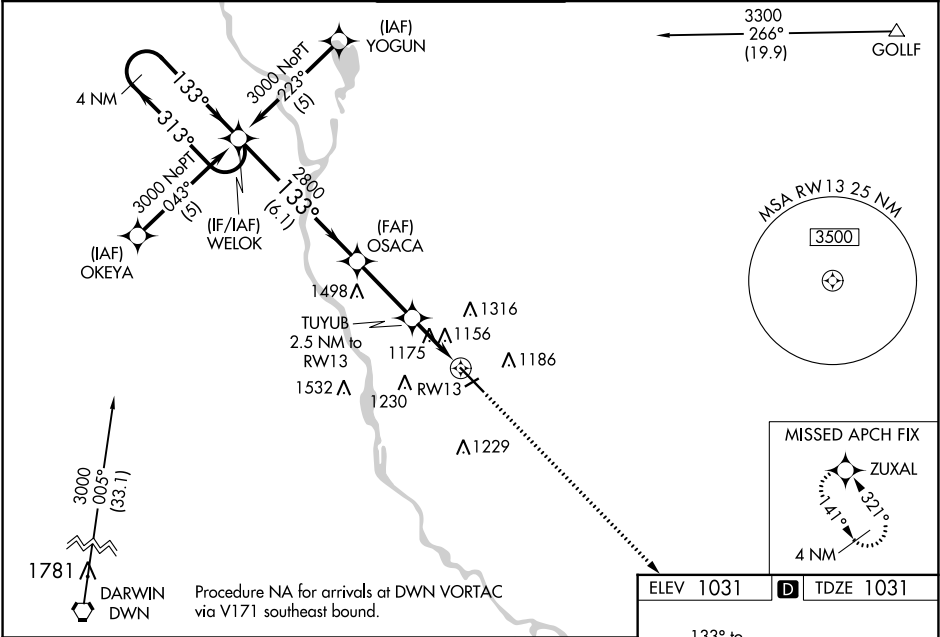
RNAV (GPS) RWY 13  
ST CLOUD RGNL (STC)

**⚠** For uncompensated Baro-VNAV systems, LNAV/VNAV NA below -17°C (2°F) or above 47°C (116°F). DME/DME RNP-0.3 NA. VDP and Baro-VNAV NA when using Little Falls altimeter setting. When local altimeter setting not received, use Little Falls altimeter setting and increase all DA 76 feet and all MDA 80 feet. Increase LNAV/ VNAV visibility ¼ mile all Cats. Circling to Rwy 5-23 NA at night. For inoperative MALSR, increase LNAV Cat D visibility ¼ mile. For inoperative MALSR when using Little Falls altimeter setting, increase LPV all Cats visibility ½ mile.

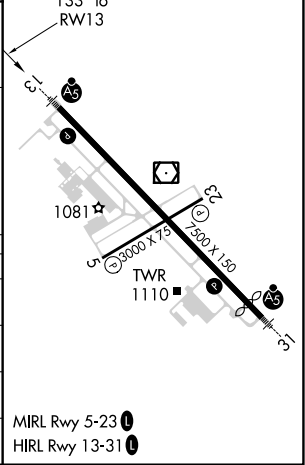
MALSR

MISSED APPROACH:  
Climb to 3000 direct  
ZUXAL and hold.

ATIS <b>119.375</b>	MINNEAPOLIS CENTER <b>121.05 397.9</b>	ST. CLOUD TOWER ★ <b>118.25 (CTAF) 0</b>	GND CON <b>123.75</b>	UNICOM <b>123.5</b>
------------------------	---	---	--------------------------	------------------------



4 NM Holding Pattern		WELOK	OSACA	TUYUB 2.5 NM to RW13	3000 ZUXAL
3000		313°	133°	733°	*LNAV only
GP 3.00° TCH 49		2800	2800	*1.1 NM to RW13	RW13
		6.1 NM	2.8 NM	1.4 NM	1.1 NM
CATEGORY	A	B	C	D	
LPV DA	1231-½		200 (200-½)		
LNAV/VNAV DA	1455-1		424 (500-1)		
LNAV MDA	1440-½	409 (500-½)	1440-¾ 409 (500-¾)	1440-1 409 (500-1)	
CIRCLING	1500-1	469 (500-1)	1500-1½ 469 (500-1½)	1620-2 589 (600-2)	



NC-1, 03 DEC 2020 to 31 DEC 2020

NC-1, 03 DEC 2020 to 31 DEC 2020