

VOR/DME STC	APP CRS	Rwy Idg	7000
<u>112.1</u>	<u>320°</u>	TDZE	1020
Chan 58		Apt Elev	1031

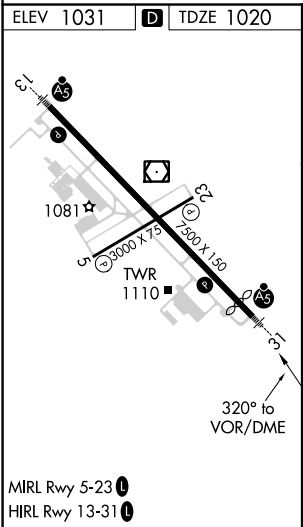
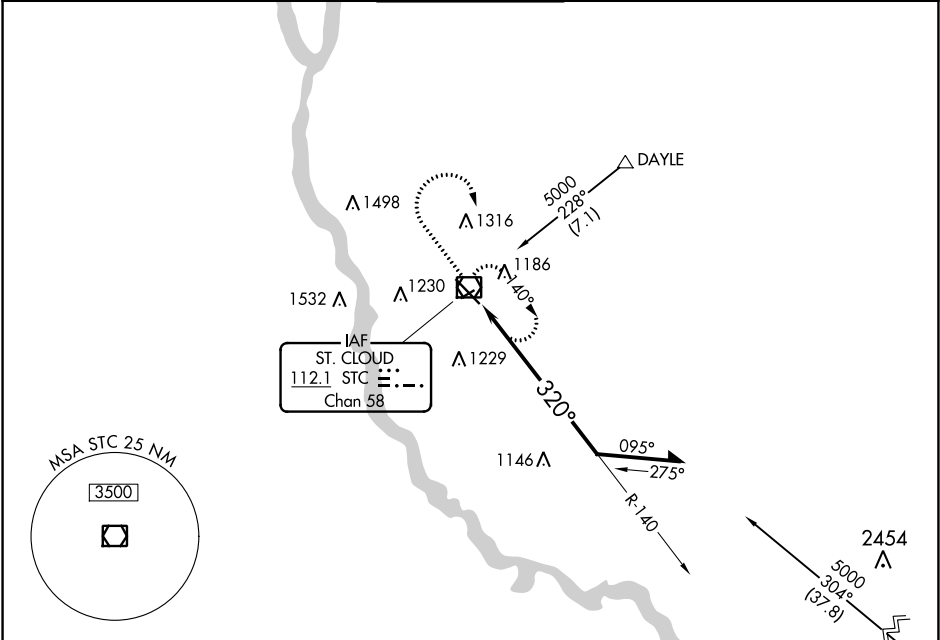
VOR RWY 31  
ST CLOUD RGNL (STC)

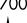


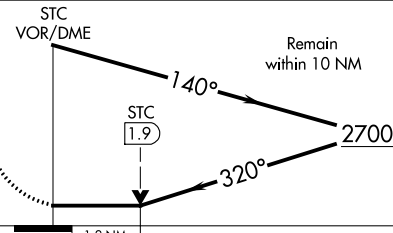
**⚠** For inop ALS, increase S-31 Cat C and D visibility to 1½ SM.

**MALSR**

MISSED APPROACH: Climb to 2700 then right turn direct STC VOR/DME and hold.

ATIS <b>119.375</b>	MINNEAPOLIS CENTER <b>121.05 397.9</b>	ST. CLOUD TOWER ★ <b>118.25 (CTAF)</b>	GND CON <b>123.75</b>	UNICOM <b>123.5</b>
------------------------	---	---	--------------------------	------------------------



2700			STC					
CATEGORY	A		B		C		D	
S-31	1460-½		440 (500-½)		1460-¾ 440 (500-¾)		1460-1 440 (500-1)	
CIRCLING	1500-1		469 (500-1)		1500-1½ 469 (500-1½)		1620-2 589 (600-2)	

NC-1, 03 DEC 2020 to 31 DEC 2020

NC-1, 03 DEC 2020 to 31 DEC 2020