

WAAS CH 86827 W12A	APP CRS 120°	Rwy Idg TDZE 1452 Apt Elev 1456
--	------------------------	---

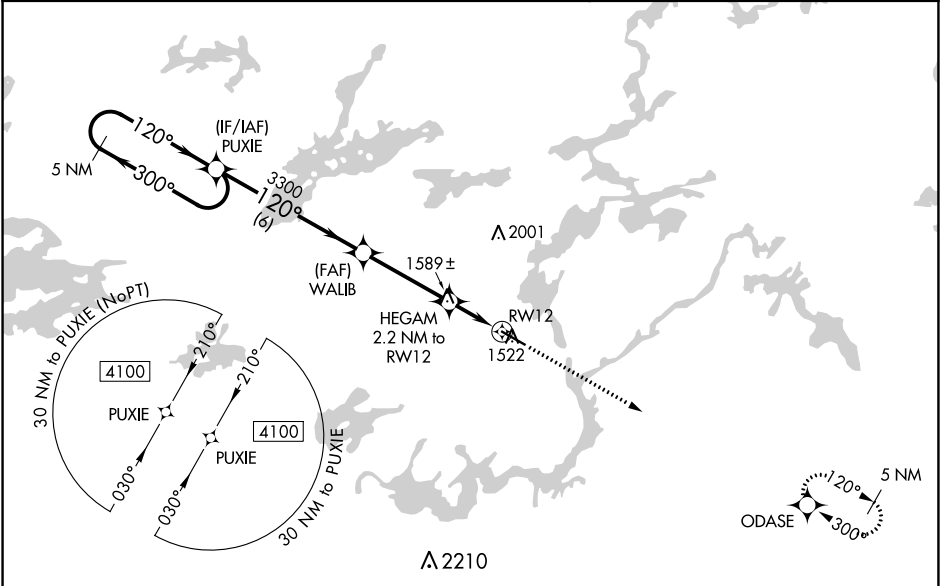
RNAV (GPS) RWY 12

ELY MUNI (ELO)

Baro-VNAV NA when using Cook altimeter setting. For uncompensated Baro-VNAV systems, LNAV/VNAV NA below -17°C (2°F) or above 34°C (93°F). DME/DME RNP-0.3 NA. VDP NA when using Cook altimeter setting. When local altimeter setting not received, use Cook altimeter setting and increase all DA/MDA 100 feet; increase LPV visibility ¼ mile all Cats, LNAV/VNAV visibility ⅓ mile all Cats, and LNAV Cat C and D visibility ¼ mile.

MISSED APPROACH: Climb to 4100 direct ODASE and hold.

AWOS-3 132.025	MINNEAPOLIS CENTER 127.9 281.45	UNICOM 122.8 (CTAF) 1
--------------------------	---	---------------------------------



ELEV 1456		TDZE 1452	
5 NM Holding Pattern		4100 ODASE	
GP 3.00° TCH 40		*1.1 NM to RW12	
6 NM		*2160	
3.5 NM		*1.1 NM to RW12	
1.1 NM		1.1 NM	
CATEGORY	A	B	C
LPV DA	1652-1 200 (200-1)		
LNAV/VNAV DA	1726-1 274 (300-1)		
LNAV MDA	1840-1 388 (400-1)	1840-1½ 388 (400-1½)	
CIRCLING	1920-1 464 (500-1)	1940-1½ 484 (500-1½)	2020-2 564 (600-2)
MIRL Rwy 12-30 1 REIL Rwy 12 and 30 1			

NC-1, 03 DEC 2020 to 31 DEC 2020

NC-1, 03 DEC 2020 to 31 DEC 2020