

WAAS CH <b>93627</b> <b>W30A</b>	APP CRS <b>300°</b>	Rwy Idg <b>5596</b> TDZE <b>1456</b> Apt Elev <b>1456</b>
--	------------------------	---

RNAV (GPS) RWY 30  
ELY MUNI (ELO)

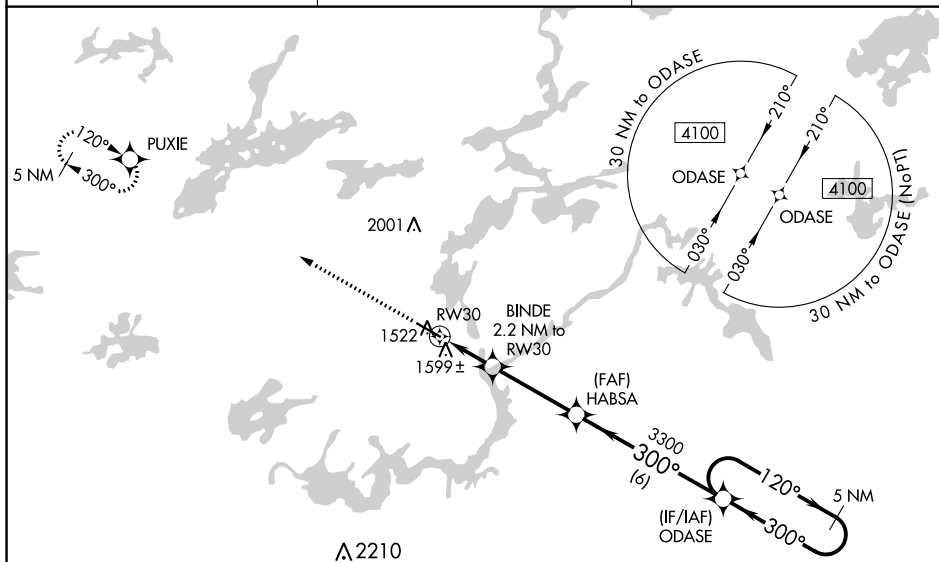
ELY MUNI (ELO)

**▼** Baro-VNAV NA when using Cook altimeter setting. For uncompensated Baro-VNAV systems, LNAV/VNAV NA below -17°C [2°F] or above 34°C [93°F]. DME/DME RNP-0.3 NA. Helicopter visibility reduction below ¾ SM NA. When local altimeter setting not received, use Cook altimeter setting and increase all DA/MDA 100 feet; increase LPV visibility ½ mile all Cats, LNAV/VNAV visibility ¾ mile all Cats, and LNAV Cat C/D visibility ½ mile.

**MISSED APPROACH:** Climb to 4100  
direct PUXIE and hold.

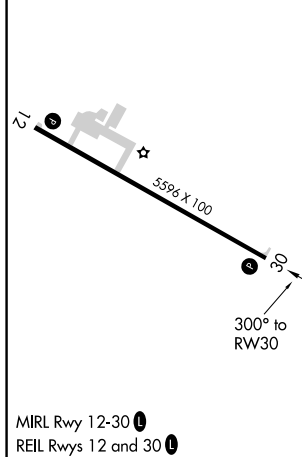
AWOS-3  
132.025

MINNEAPOLIS CENTER  
127.9 281.45

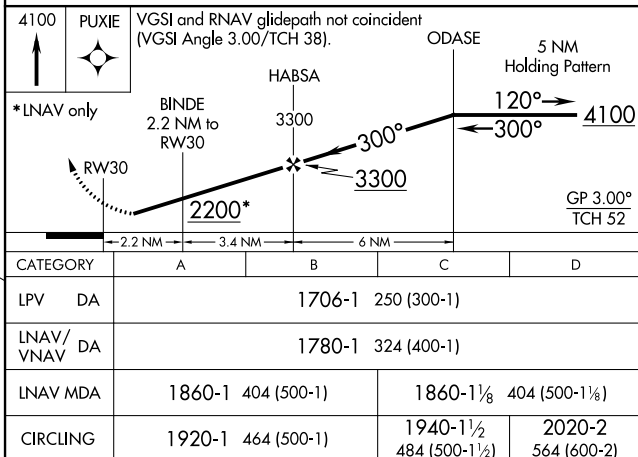
UNICOM  
122.8 (CTAF) **L**

NC-1, 03 DEC 2020 to 31 DEC 2020

ELEV 1456		TDZE 1456
-----------	--	-----------



ELY, MINNESOTA  
Amdt 1B 12NOV15



47°49'N-91°50'W

ELY MUNI (ELO)  
RNAV (GPS) RWY 30