

WAAS
CH **58321**
W33A

APP CRS
330°

Rwy Idg
TDZE **1713**
Apt Elev **1718**

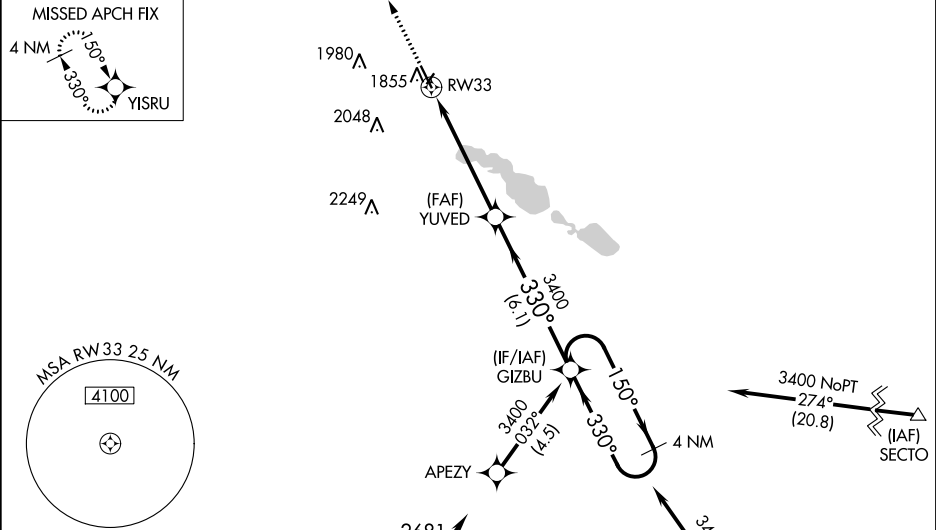
RNAV (GPS) RWY 33

MADISON MUNI (MDS)

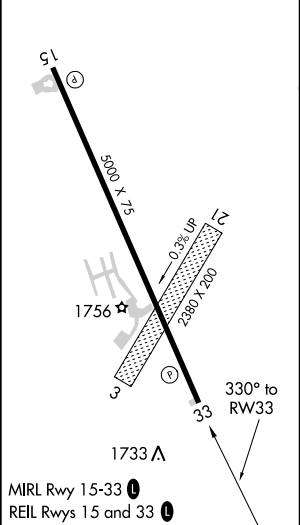
⚠ For uncompensated Baro-VNAV systems, LNAV/VNAV NA below -18°C (0°F) or above 33°C (91°F). DME/DME RNP-0.3 NA. Rwy 33 helicopter visibility reduction below ¾ SM NA. When local altimeter setting not received, use Brookings altimeter setting and increase all DA 58 feet and all MDA 60 feet. Increase LNAV/VNAV all Cats visibilities to 1¼ and LNAV Cat C/D visibilities to 1½ mile. Circling NA to Rwys 3 and 21. Baro-VNAV NA when using Brookings altimeter setting.

MISSED APPROACH: Climb to 3400 direct YISRU and hold.

AWOS-3 118.35	MINNEAPOLIS CENTER 132.05 317.4	GCO 121.725	UNICOM 122.8 (CTAF) 0
-------------------------	---	-----------------------	---------------------------------



ELEV 1718	TDZE 1713
-----------	-----------



	YISRU	YUVED	GIZBU	
				4 NM Holding Pattern
	1.2 NM to RW33	3400	330°	150°
		3400	330°	3400
	1.2	4 NM	6.1 NM	GP 3.00° TCH 39
CATEGORY	A	B	C	D
LPV DA	1963-1 250 (300-1)			
LNAV/VNAV DA	2013-1 300 (300-1)			
LNAV MDA	2120-1	407 (500-1)	2120-1½	407 (500-1½)
CIRCLING	2180-1	462 (500-1)	2180-1½	2280-2
			462 (500-1½)	562 (600-2)