


NDB LXL <u>359</u>	APP CRS 312°	Rwy Idg 4010 TDZE 1123 Apt Elev 1122
------------------------------	------------------------	---

NDB RWY 31

LITTLE FALLS/MORRISON COUNTY-LINDBERGH FIELD (LXL)

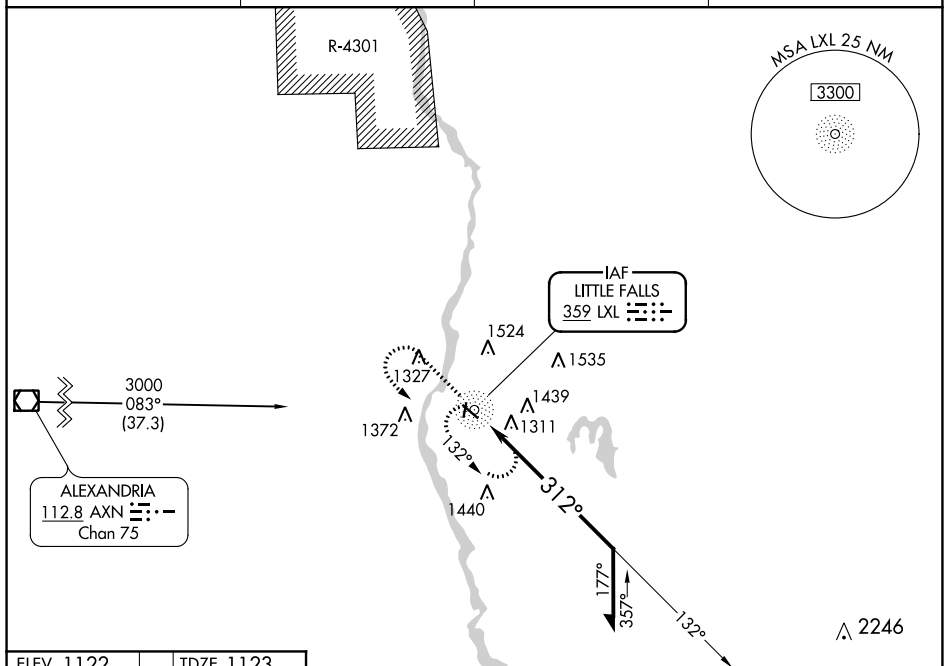
 NA	Circling Rwy 18, 36 NA. Rwy 31 helicopter visibility reduction below $\frac{3}{4}$ SM NA.	MISSED APPROACH: Climb to 3000 then left turn direct LXL NDB and hold.
--	---	--

AWOS-3
119.45

MINNEAPOLIS CENTER
118.05 239.0

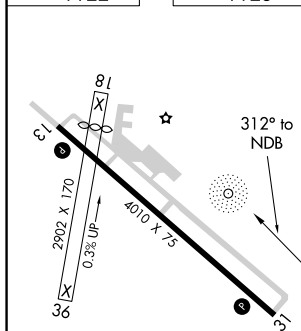
GCO
121-725

UNICOM
122.8 (CTAF) **L**



NC-1, 03 DEC 2020 to 31 DEC 2020

ELEV 1122		TDZE 1123
-----------	--	-----------



REIL Rwy 13 and 31 **L**
MIRL Rwy 13-31 **L**

LITTLE FALLS, MINNESOTA
Amdt 6E 05NOV20

LITTLE FALLS/MORRISON COUNTY-LINDBERGH FIELD (LXL)
45°57'N-94°21'W NDB RWY 31

NDB RWY 31

CATEGORY	A	B	C	D
S-31	1840-1	717 (800-1)	1840-2 717 (800-2)	1840-2¼ 717 (800-2¼)
CIRCLING	1840-1	718 (800-1)	1840-2 718 (800-2)	1980-2¾ 858 (900-2¾)