

|  |                        |   |
|--|------------------------|---|
| WAAS<br>CH <b>82431</b><br><b>W34A</b> | APP CRS<br><b>344°</b> | Rwy Idg<br>TDZE <b>1206</b><br>Apt Elev <b>1206</b> |
|--|------------------------|---|

RNAV (GPS) RWY 34

AITKIN MUNI-STEVE KURTZ FIELD (AIT)

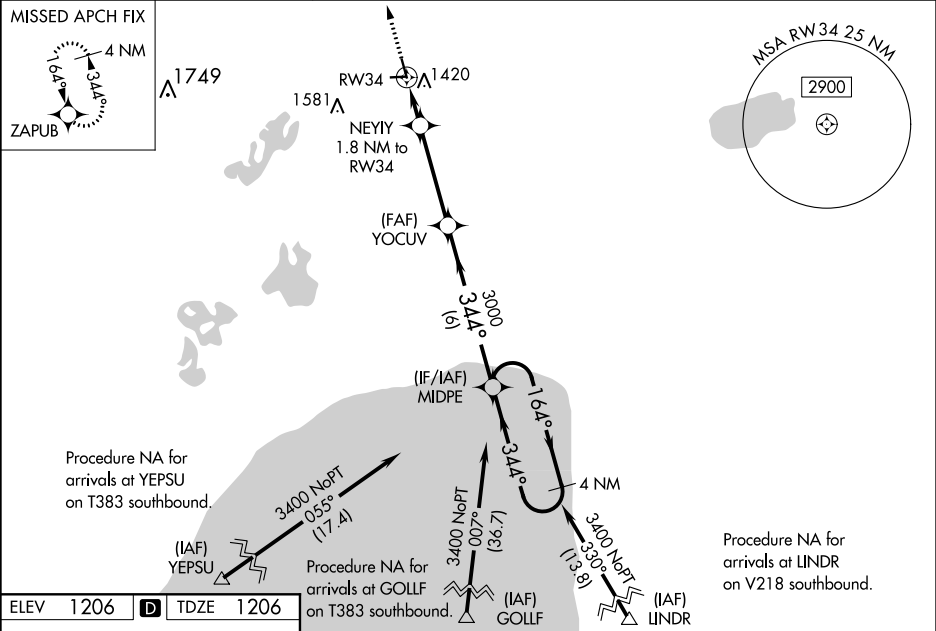
▼

▲

Baro-VNAV NA when using Mc Gregor altimeter setting. For uncompensated Baro-VNAV systems, LNAV/VNAV NA below -17°C (2°F) or above 54°C (130°F). DME/DME RNP-0.3 NA. When local altimeter setting not received; use Mc Gregor altimeter setting and increase all DA 40 feet and all visibilities ½ SM, increase all MDA 40 feet and LNAV Cat C visibility ¼ SM. Circling NA to Rwy 8 and 26. Rwy 34 helicopter visibility reduction below ¾ SM NA.

MISSED APPROACH:  
Climb to 3400 direct ZAPUB and hold.

|                          |   |                                  |
|--------------------------|---|----------------------------------|
| AWOS-3<br><b>118.675</b> | MINNEAPOLIS CENTER<br><b>118.05 239.0</b> | UNICOM<br><b>123.05 (CTAF) 0</b> |
|--------------------------|---|----------------------------------|



|                   |  | <div><div>3400</div><div>ZAPUB</div></div> <div>*LNAV only</div> <div><div>NEYII 1.8 NM to RW34</div><div>YOCUV</div><div>MIDPE</div></div> <div><div>1.8 NM</div><div>3.7 NM</div><div>6 NM</div></div> |              | <div>4 NM Holding Pattern</div> <div><div>164°</div><div>344°</div><div>3400</div></div> <div>GP 3.00°<br/>TCH 39</div> |    |
|-------------------|--|--|--------------|---|----|
| CATEGORY          |  | A  | B            | C   | D  |
| LPV DA            |  | 1548-1⅓  | 342 (400-1⅓) |   | NA |
| LNAV/VNAV DA      |  | 1620-1⅓  | 414 (500-1⅓) |   | NA |
| LNAV MDA          |  | 1720-1   | 514 (600-1)  | 1720-1⅓<br>514 (600-1⅓)   | NA |
| <b>C</b> CIRCLING |  | 1780-1   | 574 (600-1)  | 1900-2<br>694 (700-2)   | NA |