

WAAS CH <b>90140</b> <b>W12A</b>	APP CRS <b>128°</b>	Rwy Idg TDZE Apt Elev	<b>4652</b> <b>2706</b> <b>2706</b>
--	------------------------	-----------------------------	---

## RNAV (GPS) RWY 12

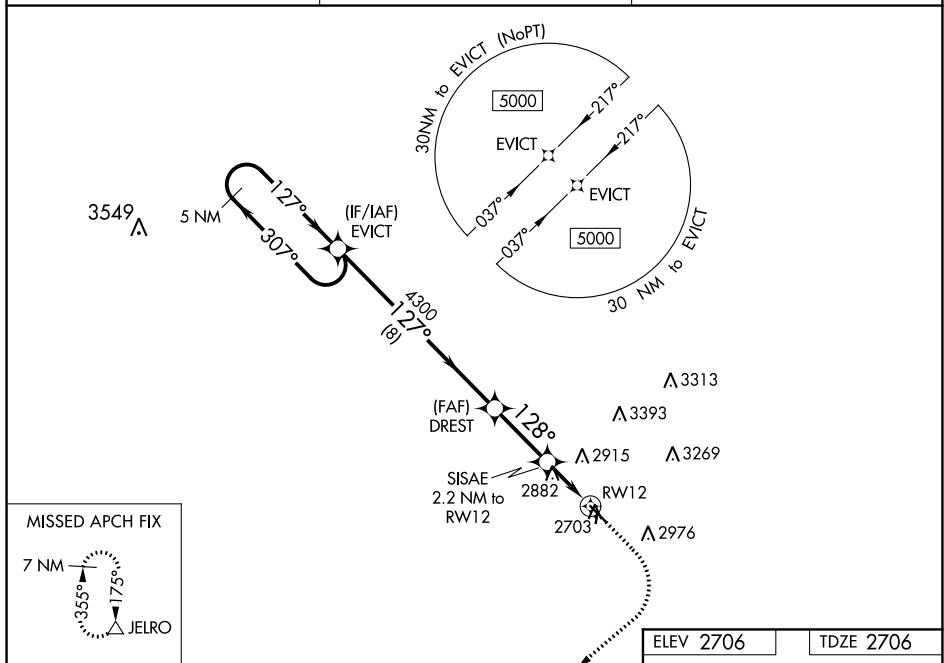
HETTINGER MUNI (HEI)



For uncompensated Baro-VNAV systems, LNAV/VNAV NA below -20°C (-4°F) or above 54°C (130°F). DME/DME RNP-0.3 NA. Circling NA northeast of Rwy 12-30. Circling NA to Rwy 17 and 35.

**MISSED APPROACH:** Climb to 3200, then climbing right turn to 9000 direct JELRO and hold, continue climb-in-hold to 9000.

ASOS <b>119.925</b>	MINNEAPOLIS CENTER <b>124.25 236.825</b>	UNICOM <b>122.8 (CTAF)</b>
------------------------	---	-------------------------------



VGS1 and RNAV glidepath not coincident.  
(VGS1 Angle 3.00/TCH 25)

5 NM Holding Pattern

EVICT

DREST

3200

9000

JELRO

SISAE  
2.2 NM to RW12

\*LNAV only

128° to RW12

5000

307°

127°

4300

127°

128°

\*3440

1.3 NM to RW12

RW12

8 NM

2.7 NM

0.9 NM

1.3 NM

CATEGORY	A	B	C	D
LPV DA	2956-1		250 (300-1)	
LNAV/VNAV DA	3168-1½		462 (500-1½)	
LNAV MDA	3140-1	434 (500-1)	3140-1¼	434 (500-1¼)
CIRCLING	3180-1 474 (500-1)	3240-1 534 (600-1)	3240-1½ 534 (600-1½)	3460-2½ 754 (800-2½)

MRL Rwy 12-30

RNAV (GPS) RWY 12