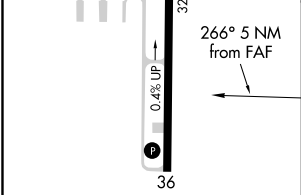
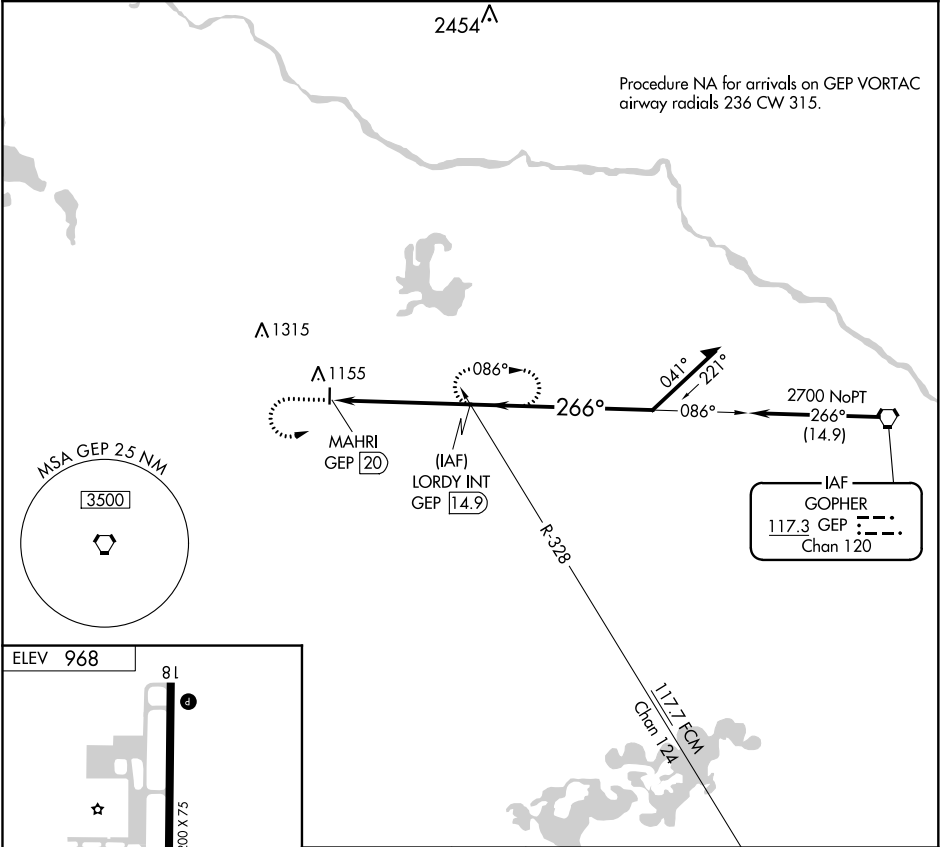


VORTAC GEP	APP CRS	Rwy Idg	N/A
117.3	266°	TDZE	N/A
Chan 120		Apt Elev	968

VOR-A
BUFFALO MUNI (CFE)

⚠ When local altimeter setting not received, use Maple Lake altimeter setting. When VGSI inoperative, procedure NA at night.	MISSED APPROACH: Climb to 2200 then climbing left turn to 3600 via GEP VORTAC R-266 to LORDY INT/GEP VORTAC 14.9 DME and hold.
--	--

AWOS-3 120.45	MINNEAPOLIS APP CON 126.5 335.65	GCO 121.725	UNICOM 122.8 (CTAF) 0
-------------------------	--	-----------------------	--



REIL Rwy 18 and 36	
MIRL Rwy 18-36	0
FAF to MAP 5 NM	
Knots	60 90 120 150 180
Min:Sec	5:00 3:20 2:30 2:00 1:40

2200	3600	LORDY INT	LORDY INT GEP 14.9	Remain within 10 NM
↑	GEP R-266			
		MAHRI GEP (20)	2700	266° 2700
			5 NM	
CATEGORY				
A				
B				
C				
D				
CIRCLING				
1580-1 612 (700-1)				
1580-1 3/4 612 (700-1 3/4)				
NA				

NC-1, 03 DEC 2020 to 31 DEC 2020

NC-1, 03 DEC 2020 to 31 DEC 2020