

WAAS CH 63030 W14A	APP CRS 137°	Rwy Idg TDZE 1083 Apt Elev 1083
--	------------------------	---

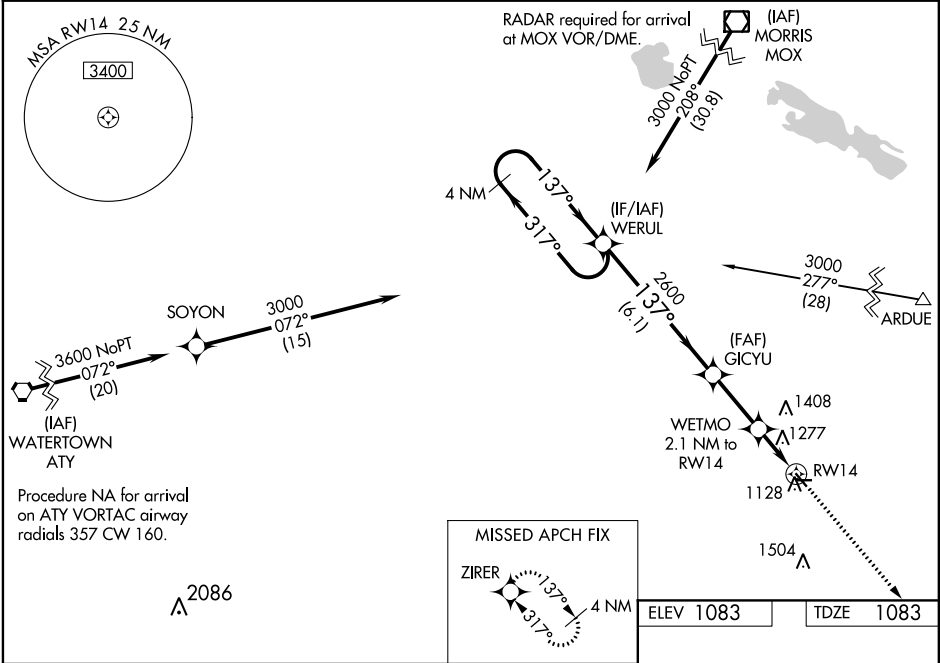
RNAV (GPS) RWY 14

LAC QUI PARLE COUNTY (DXX)

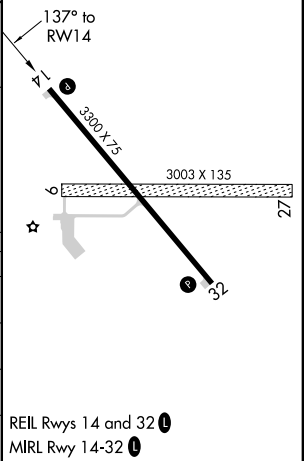
For uncompensated Baro-VNAV systems, LNAV/VNAV NA below -17°C (2°F) or above 54°C (130°F). When local altimeter setting not received, use Appleton Muni altimeter setting and increase all DA 46 feet, increase all MDA 60 feet, and visibility LNAV/VNAV all Cats to 1 1/8 mile, Circling Cat C to 1 1/4 mile. DME/DME RNP-0.3 NA. Baro-VNAV and VDP NA when using Appleton Muni altimeter setting. Circling NA to Rwy 9 and 27.

MISSED APPROACH: Climb to 3000 direct ZIRER and hold.

AWOS-3 118.975	MINNEAPOLIS CENTER 128.5 306.2	UNICOM 122.8 (CTAF) 0
--------------------------	--	---------------------------------



4 NM Holding Pattern		VGSi and RNAV glidepath not coincident (VGSi Angle 3.00/TCH 23).		3000	ZIRER
GP 3.00° TCH 40		WERUL	GICYU	WETMO 2.1 NM to RW14	*LNAV only
3000 ← 317° → 137°		2600	*1.4 NM to RW14	RW14	
6.1 NM		2.5 NM	0.7 NM	1.4 NM	
CATEGORY	A	B	C	D	
LPV DA	1283-1 200 (200-1)			NA	
LNAV/VNAV DA	1572-1 1/8 489 (500-1 1/8)			NA	
LNAV MDA	1540-1	457 (500-1)	1540-1 1/8 457 (500-1 1/8)	NA	
CIRCLING	1640-1	557 (600-1)	1640-1 1/2 557 (600-1 1/2)	NA	



NC-1, 03 DEC 2020 to 31 DEC 2020

NC-1, 03 DEC 2020 to 31 DEC 2020