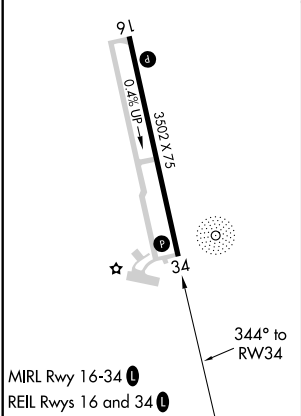
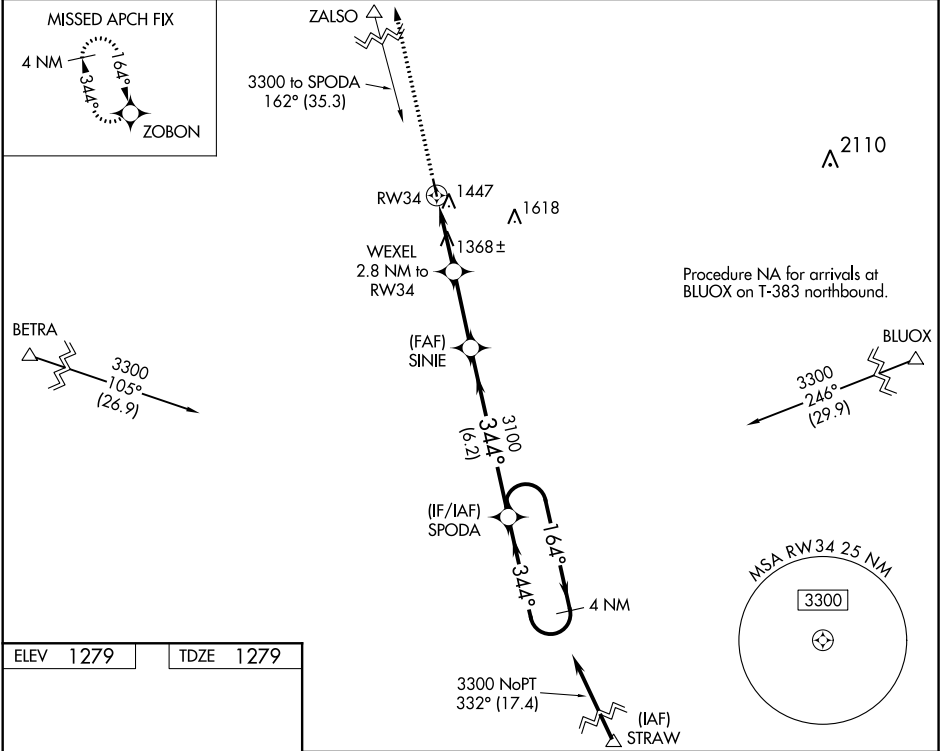


WAAS CH <b>90326</b> <b>W34A</b>	APP CRS <b>344°</b>	Rwy Idg TDZE Apt Elev	<b>3502</b> <b>1279</b> <b>1279</b>
--	------------------------	-----------------------------	---

**RNAV (GPS) RWY 34**  
FOSSTON MUNI-ANDERSON FIELD (F'S'E')

RNP APCH	VDP NA when using Thief River Falls altimeter setting. When local altimeter setting not received, use Thief River Falls altimeter setting and increase all MDA 100 feet and increase LP and LNAV Cat C visibility 3/8 SM, and increase Circling Cat C visibility 1/2 SM.	MISSED APPROACH: Climb to 4000 direct ZOBON and hold.
----------	--	--

AWOS-3 <b>118.35</b>	MINNEAPOLIS CENTER <b>134.75 251.1</b>	GCO <b>121.725</b>	CTAF <b>122.9</b>
-------------------------	---	-----------------------	----------------------



4000	ZOBON	VGSI and descent angles not coincident (VGSI Angle 2.80/TCH 25).		SPODA	4 NM Holding Pattern
WEXEL 2.8 NM to RW34	SINIE	3100	344°	3300	164°
1.1 NM to RW34	2200	3100	344°	3300	344°
1.1 NM	1.7 NM	2.8 NM	6.2 NM		
CATEGORY	A	B	C	D	
LP MDA	1620-1	341 (400-1)		NA	
LNAV MDA	1760-1	481 (500-1)	1760-1 3/8 481 (500-1 3/8)	NA	
CIRCLING	1860-1	581 (600-1)	1860-1 1/2 581 (600-1 1/2)	NA	

NC-1, 03 DEC 2020 to 31 DEC 2020

NC-1, 03 DEC 2020 to 31 DEC 2020