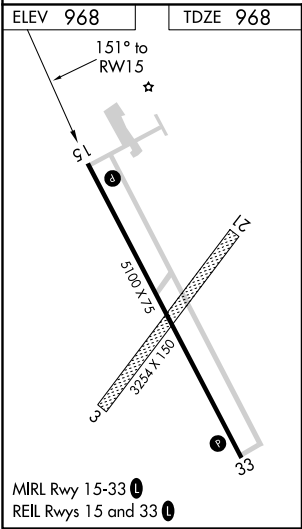
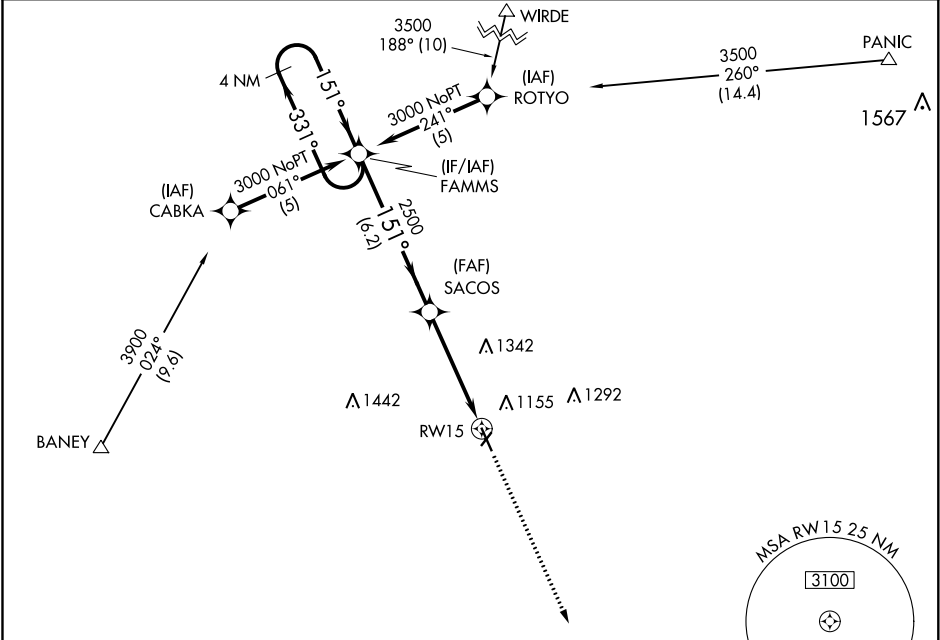


NA

DME/DME RNP-0.3 NA. Circling to Rwy 3/21 NA at night.
If local altimeter setting not received, use Fergus Falls, MN altimeter setting and increase all MDAs 80 feet.
VDP NA when using Fergus Falls, MN altimeter setting.

MISSED APPROACH: Climb to 3000 direct BEGGS and hold.

AWOS-3 127.875	MINNEAPOLIS CENTER 127.35 278.3	UNICOM 123.0 (CTAF) 0
-------------------	------------------------------------	--------------------------



4 NM Holding Pattern				3000	BEGGS
FAMMS				↑	✧
SACOS				1.6 NM to RW15	
3000 ← 331° 151° → 151° 2500				3.04° TCH 55	
VGSI and descent angles not coincident (VGSI Angle 3.00/TCH 42).				6.2 NM	3 NM
CATEGORY	A	B	C	D	
LNAV MDA	1500-1	532 (600-1)	1500-1½ 532 (600-1½)	1500-1¾ 532 (600-1¾)	
CIRCLING	1520-1	552 (600-1)	1520-1½ 552 (600-1½)	1560-2 592 (600-2)	