

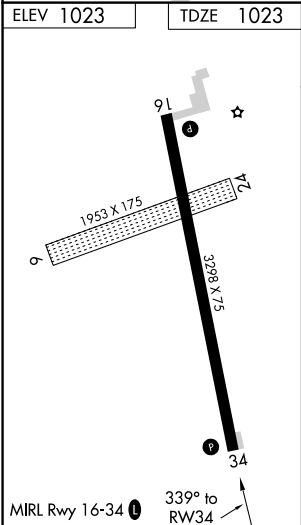
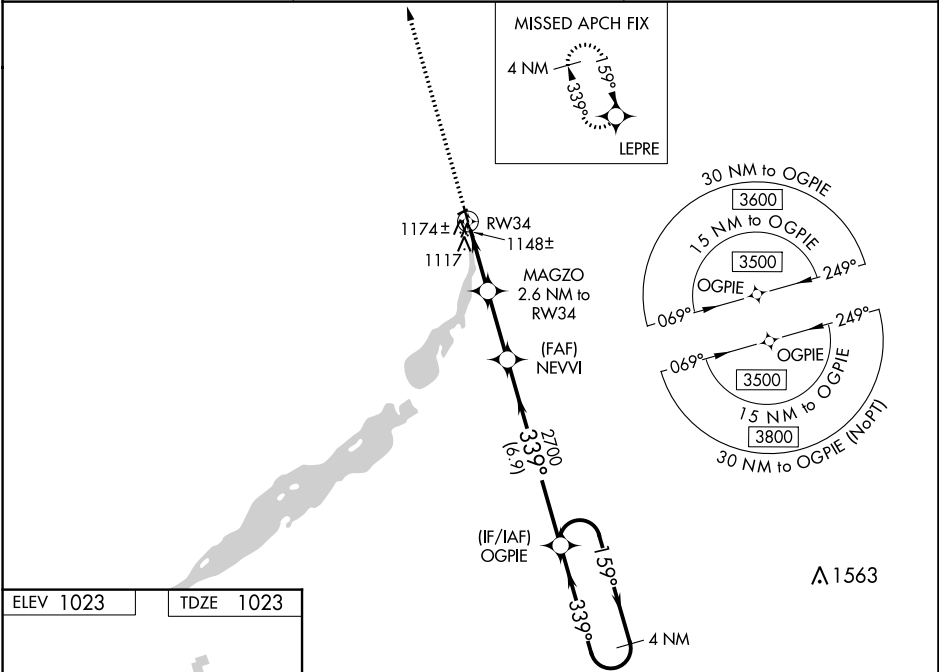
WAAS CH 86730 W34A	APP CRS 339°	Rwy Idg TDZE 1023 Apt Elev 1023
--	------------------------	---

RNAV (GPS) RWY 34
WHEATON MUNI (ETH)

⚠ When VGSi inop, Straight-in/Circling Rwy 34 procedure NA at night.
DME/DME RNP-0.3 NA. Visibility reduction by helicopters NA.
When local altimeter setting not received, use Wahpeton/Harry Stern altimeter setting and increase all MDA 80 feet and LP Cat C and LNAV Cat C visibility to 1 3/8 mile.

MISSED APPROACH: Climb to 3500 direct LEPRE and hold.

AWOS-3 118.775	MINNEAPOLIS CENTER 126.1 269.2	UNICOM 122.8 (CTAF) 0
--------------------------	--	---------------------------------



3500	LEPRE	VGSi and descent angles not coincident (VGSi Angle 3.00/TCH 25).		4 NM Holding Pattern
CATEGORY	A	B	C	D
LP MDA	1400-1 377 (400-1)			NA
LNAV MDA	1440-1	417 (500-1)	1440-1 1/8 417 (500-1 1/8)	NA
CIRCLING	1480-1	457 (500-1)	1480-1 1/2 457 (500-1 1/2)	NA

NC-1, 03 DEC 2020 to 31 DEC 2020

NC-1, 03 DEC 2020 to 31 DEC 2020