

NDB VVV

332

APP CRS

355°

Rwy Idg

3417

TDZE

1097

Apt Elev

1101

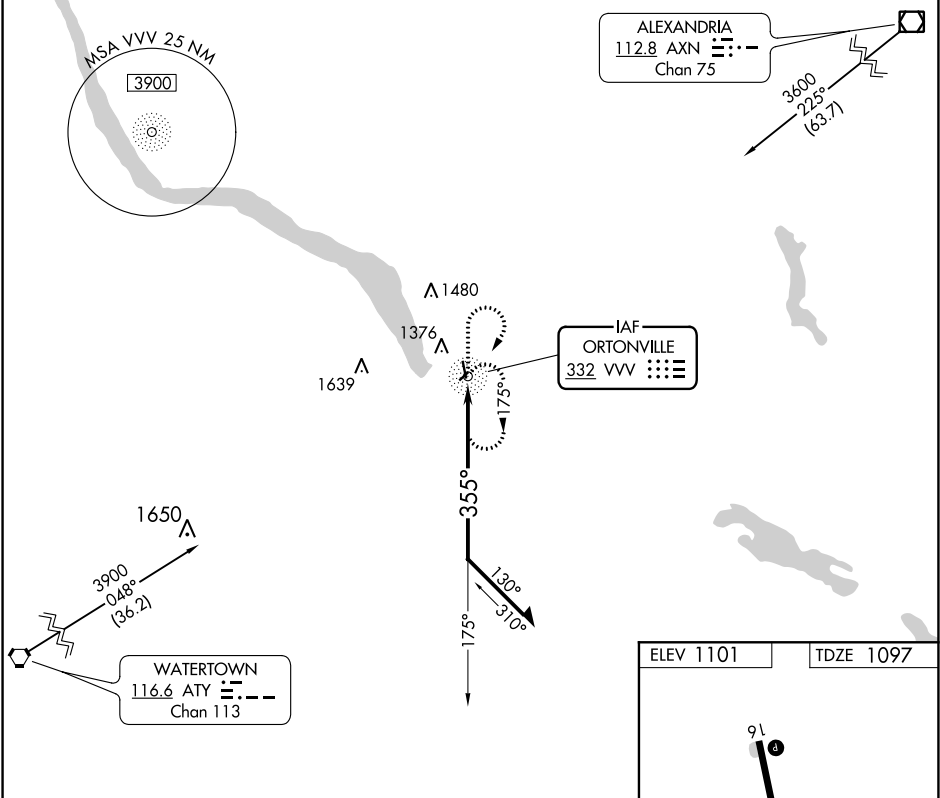
ORTONVILLE MUNI-MARTINSON FIELD (VVV)

NDB RWY 34

NA

MISSED APPROACH: Climb to 3600 then right turn direct VVV NDB and hold.

AWOS-3 119.225	MINNEAPOLIS CENTER 128.5 306.2	GCO 121.725	UNICOM 122.8 (CTAF) 0
-------------------	-----------------------------------	----------------	--------------------------



Remain within 10 NM

3200

175°

355°

VVV* NDB

3600

VVV

* Maintain 3600 or above until established outbound on procedure turn.

CATEGORY	A	B	C	D
S-34	1660-1	563 (600-1)	1660-1½ 563 (600-1½)	NA
CIRCLING	1740-1	639 (700-1)	1740-1¾ 639 (700-1¾)	NA

ELEV 1101

TDZE 1097

91

3417 X 75

2175 X 275

34

355° to NDB

MIRL Rwy 16-34 0