

WAAS
CH 87124
W34A

APP CRS
344°

Rwy Idg
TDZE 1097
Apt Elev 1101

RNAV (GPS) RWY 34

ORTONVILLE MUNI-MARTINSON FIELD (V V V)

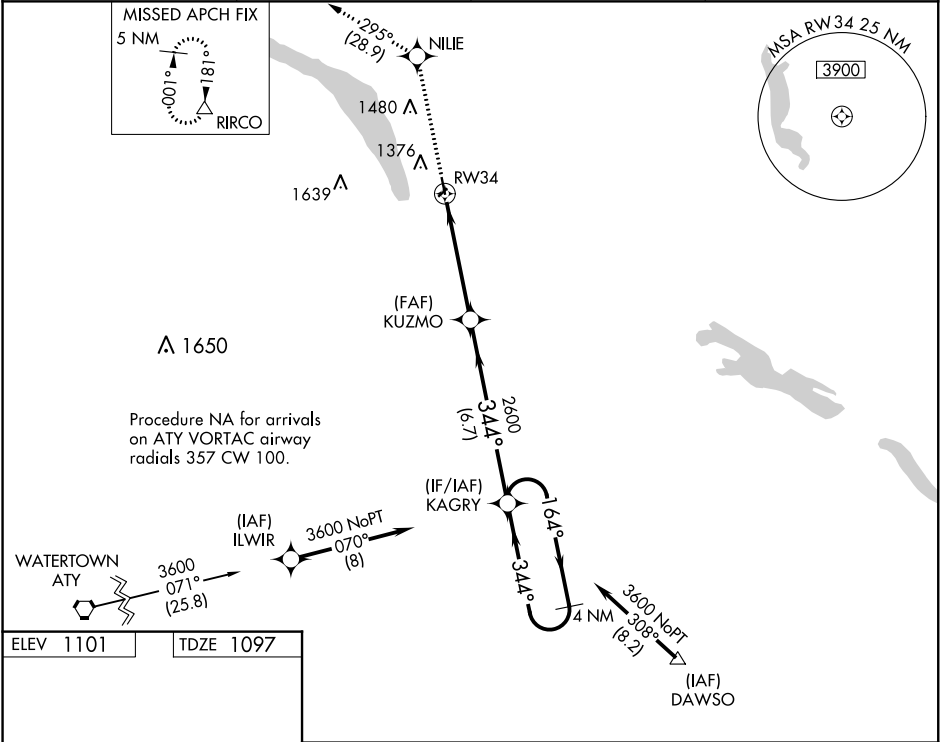
▼

▲

DME/DME RNP-0.3 NA. Visibility reduction by helicopters NA. Procedure NA at night. When local altimeter setting not received, use Appleton altimeter setting and increase all MDA 60 feet, increase LP and LNAV Cat C visibility to 1½ mile and Circling Cat C visibility to 2 miles.

MISSED APPROACH:
Climb to 4500 direct
NILE and on track 295°
to RIRCO and hold.

| | | | |
|-------------------|-----------------------------------|----------------|--------------------------|
| AWOS-3 119.225 | MINNEAPOLIS CENTER 128.5 306.2 | GCO 121.725 | UNICOM 122.8 (CTAF) 0 |
|-------------------|-----------------------------------|----------------|--------------------------|



ELEV 1101

TDZE 1097

91
3617 x 75
2175 x 275
34
344° to RW34

4500
NILE
tr 295°
RIRCO

4 NM
KAGRY
Holding Pattern

RW34
KUZMO
2600
3.00°
TCH 41
4.6 NM
6.7 NM

| CATEGORY | A | B | C | D |
|----------|--------|-------------|-------------------------|----|
| LP MDA | 1520-1 | 423 (500-1) | 1520-1¼ 423 (500-1¼) | NA |
| LNAV MDA | 1520-1 | 423 (500-1) | 1520-1¼ 423 (500-1¼) | NA |
| CIRCLING | 1740-1 | 639 (700-1) | 1740-1¾ 639 (700-1¾) | NA |