

| | | |
|--|------------------------|---|
| WAAS CH 50322 W15A | APP CRS 151° | Rwy Idg TDZE 1569 Apt Elev 1570 |
|--|------------------------|---|

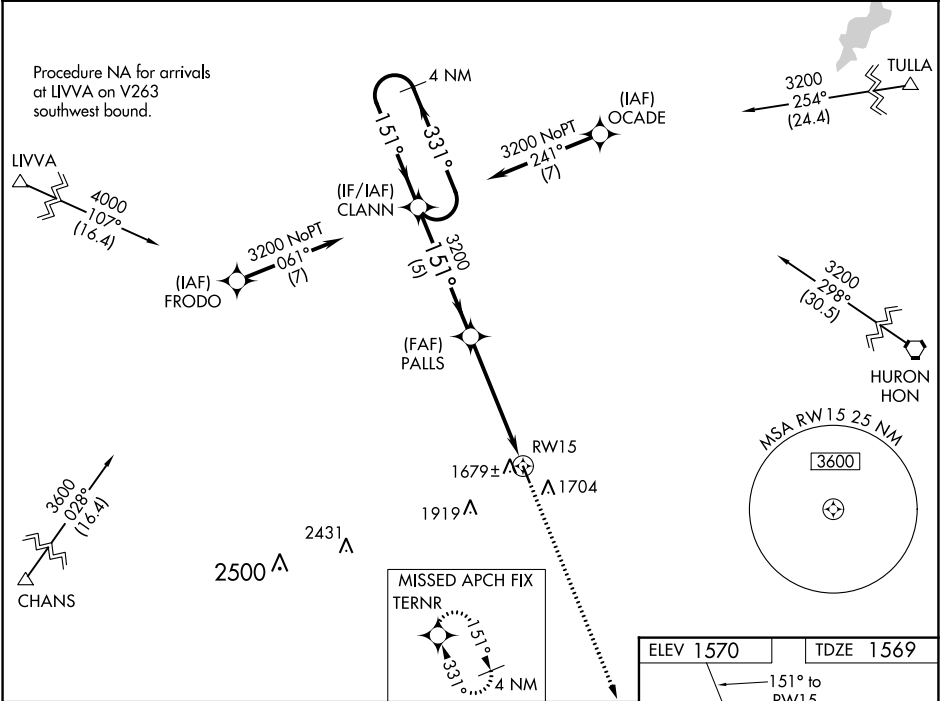
RNAV (GPS) RWY 15
MILLER MUNI (MKA)

▼ Baro-VNAV NA. Use Huron altimeter setting; when not received, use Mitchell altimeter setting and increase all DA 62 feet and all MDA 80 feet; increase LPV and LNAV/VNAV all Cats visibility ¼ mile. DME/DME RNP-0.3 NA.

▲ NA

MISSED APPROACH: Climb to 3700 direct TERNR and hold.

| | | | |
|--|----------------------|-----------------------|--------------|
| MINNEAPOLIS CENTER 125.1 269.1 | CTAF 122.9 | GCO 121.725 | 122.8 |
|--|----------------------|-----------------------|--------------|



4 NM Holding Pattern

CLANN

PALLS

3200

331°

151°

GP 3.00°

TCH 40

5 NM

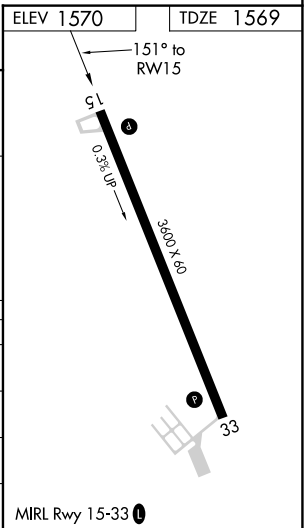
5 NM

RWY15

3700

TERNR

| CATEGORY | A | B | C | D |
|--------------|-----------------------|----------------------------|----|---|
| LPV DA | 1883-1 | 314 (400-1) | NA | |
| LNAV/VNAV DA | 1964-1 $\frac{3}{8}$ | 395 (400-1 $\frac{3}{8}$) | NA | |
| LNAV MDA | 2100-1 | 531 (600-1) | NA | |
| CIRCLING | 2180-1 610 (700-1) | 2220-1 650 (700-1) | NA | |



NC-1, 03 DEC 2020 to 31 DEC 2020

NC-1, 03 DEC 2020 to 31 DEC 2020