

WAAS CH <b>90139</b> <b>W35A</b>	APP CRS <b>352°</b>	Rwy Idg TDZE <b>1010</b> Apt Elev <b>1033</b>
--	------------------------	---

RNAV (GPS) RWY 35

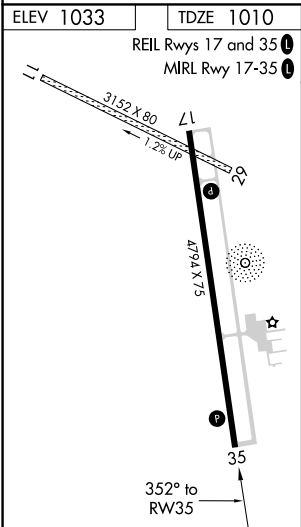
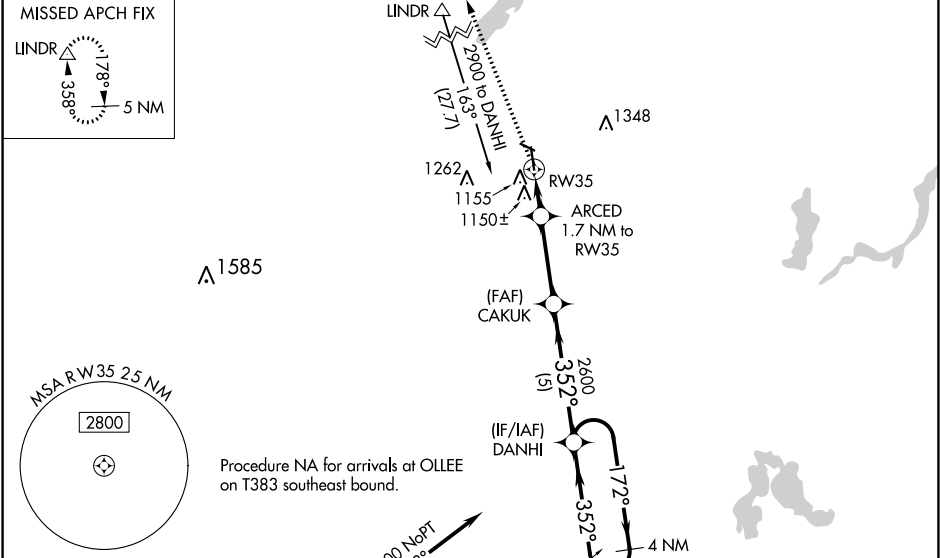
MORA MUNI (JMR)

RNP APCH.

Circling NA to Rwys 11 and 29. Circling Rwy 17 NA at night. Baro-VNAV and VDP NA when using Hinckley altimeter setting. Rwy 35 helicopter visibility reduction below ¾ SM NA. For uncompensated Baro-VNAV systems, LNAV/VNAV NA below -17°C or above 54°C. When local altimeter setting not received, use Hinckley altimeter setting: increase all DAs 43 feet and increase LNAV/VNAV all Cat visibilities ½ SM; increase all MDAs 60 feet and LNAV and Circling Cat C and D visibilities ¼ SM.

MISSED APPROACH: Climb to 5500 direct LINDR and hold, continue climb-in-hold to 5500.

AWOS-3 <b>123.925</b>	MINNEAPOLIS CENTER <b>121.05 397.9</b>	UNICOM <b>122.8</b> (CTAF) <b>0</b>
--------------------------	---	--



5500	LINDR	CAKUK	DANHI	4 NM Holding Pattern
		ARCED 1.7 NM to RW35		
* LNAV only		* 1.2 NM to RW35	352°	172°
		1580*	2600	6000 2600
		1.2 NM	0.5	3.2 NM
				5 NM
CATEGORY	A	B	C	D
LPV DA	1267-1 257 (300-1)			
LNAV/VNAV DA	1316-1 306 (300-1)			
LNAV MDA	1420-1 410 (400-1)	1420-1½ 410 (400-1½)		
CIRCLING	1480-1 447 (500-1)	1500-1 467 (500-1)	1700-2 667 (700-2)	1700-2¼ 667 (700-2¼)

NC-1, 03 DEC 2020 to 31 DEC 2020

NC-1, 03 DEC 2020 to 31 DEC 2020