

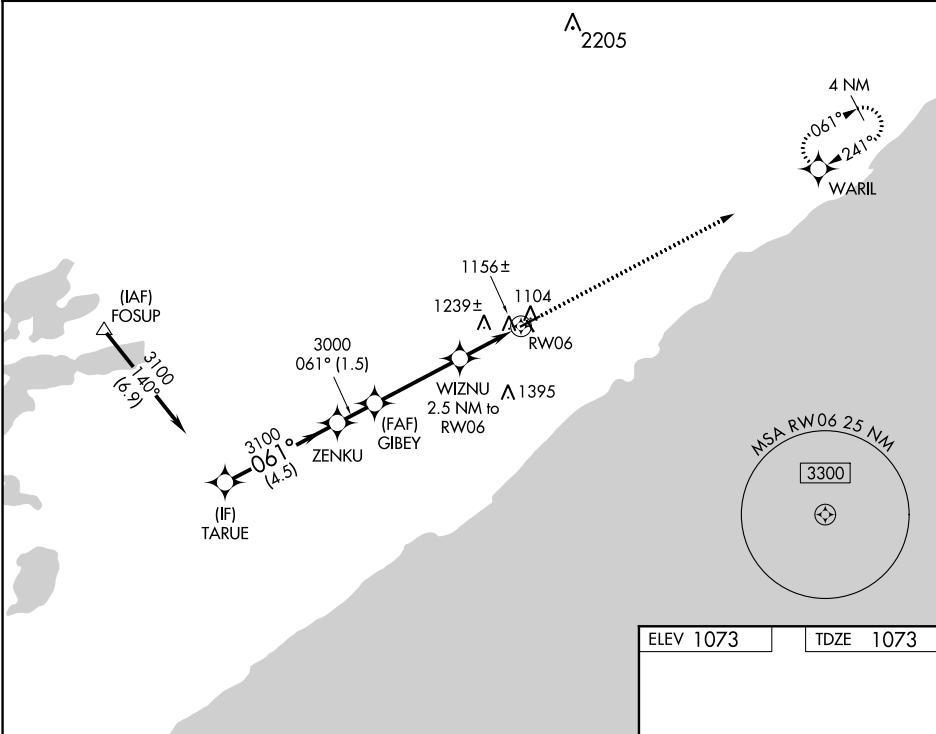
WAAS CH 53721 W06A	APP CRS 061°	Rwy Idg TDZE Apt Elev	4400 1073 1073
--	------------------------	-----------------------------	---

RNAV (GPS) RWY 6

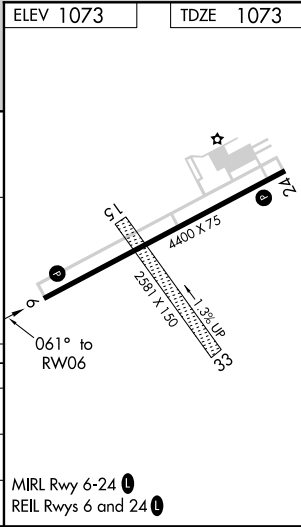
RICHARD B HELGESON (TWM)

RNP APCH.	MISSED APPROACH: Climb to 3000 direct WARIL and hold.
▼ Rwy 6 helicopter visibility reduction below ¾ SM NA. ▲ Circling Rwy 15, 33 NA.	

AWOS-3 119.325	DULUTH APP CON 125.45 233.7	GCO 121.725	CTAF 122.9
--------------------------	---------------------------------------	-----------------------	----------------------



VGSI and descent angles not coincident (VGSI Angle 3.00/TCH 24).				
TARUE	ZENKU	GIBEY	WIZNU	3000 WARIL
3100	3100	3000	1900	
061°	061°	3.00° TCH 40	2.5 NM to RW06	1 NM to RW06
4.5 NM	1.5 NM	3.4 NM	1.5 NM	1 NM
CATEGORY	A	B	C	D
LP MDA	1420-1	347 (400-1)	NA	NA
LNAV MDA	1500-1	427 (500-1)	NA	NA
CIRCLING	1600-1 527 (600-1)	1680-1 607 (700-1)	NA	NA



NC-1, 03 DEC 2020 to 31 DEC 2020

NC-1, 03 DEC 2020 to 31 DEC 2020