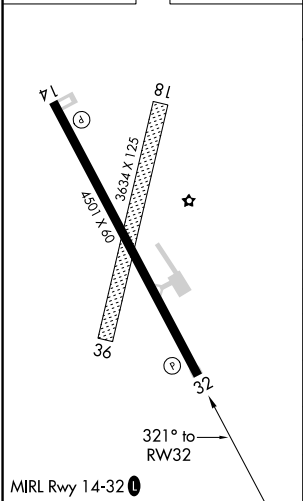
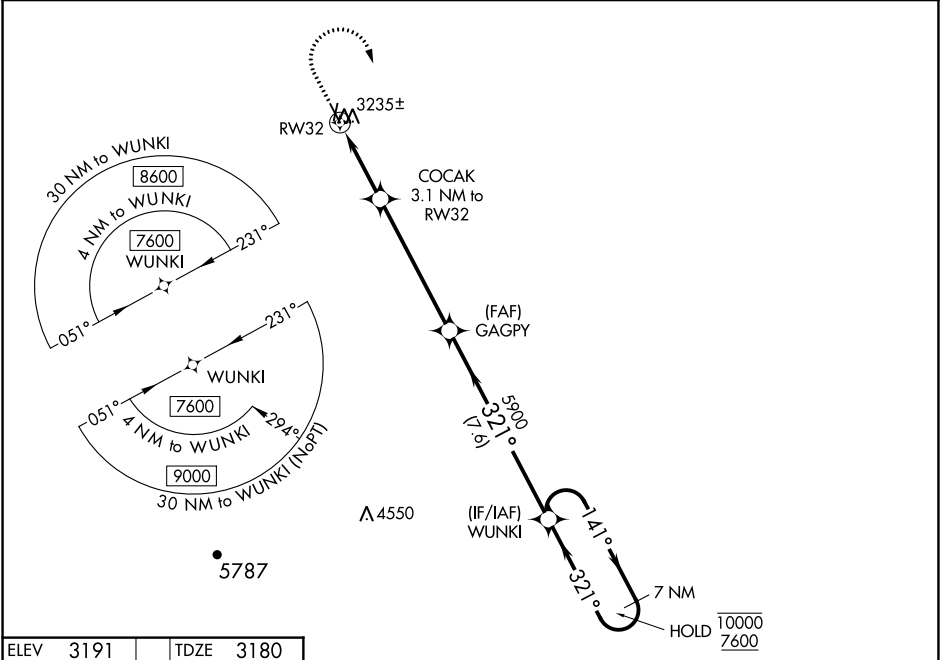


WAAS CH 82728 W32A	APP CRS 321°	Rwy Idg TDZE 3180 Apt Elev 3191
--	------------------------	---

RNAV (GPS) RWY 32
BELLE FOURCHE MUNI (EFC)

RNP APCH.	MISSED APPROACH: Climb to 3800 then climbing right turn to 7600 direct WUNKI and hold. Continue climb-in-hold to 7600.
NA Baro-VNAV NA. Use Ellsworth altimeter setting.	

DENVER CENTER 127.95 338.2	AUNICOM 122.8 (CTAF) 0
--------------------------------------	----------------------------------



ELEV 3191 TDZE 3180		A 5266		VGSi and RNAV glidepath not coincident (VGSi Angle 3.00/TCH 33).		7 NM Holding Pattern	
3800		7600		WUNKI			
*LNAV only		COCACK 3.1 NM to RWY 32		GAGPY 5900		WUNKI	
RWY 32		3.1 NM		5.3 NM		7.6 NM	
321° to RWY 32		321°		321°		141°	
3191		3180		3170		3160	
3150		3140		3130		3120	
3110		3100		3090		3080	
3070		3060		3050		3040	
3030		3020		3010		3000	
2990		2980		2970		2960	
2940		2930		2920		2910	
2900		2890		2880		2870	
2850		2840		2830		2820	
2800		2790		2780		2770	
2750		2740		2730		2720	
2700		2690		2680		2670	
2650		2640		2630		2620	
2600		2590		2580		2570	
2550		2540		2530		2520	
2500		2490		2480		2470	
2450		2440		2430		2420	
2400		2390		2380		2370	
2350		2340		2330		2320	
2300		2290		2280		2270	
2250		2240		2230		2220	
2200		2190		2180		2170	
2150		2140		2130		2120	
2100		2090		2080		2070	
2050		2040		2030		2020	
2000		1990		1980		1970	
1950		1940		1930		1920	
1900		1890		1880		1870	
1850		1840		1830		1820	
1800		1790		1780		1770	
1750		1740		1730		1720	
1700		1690		1680		1670	
1650		1640		1630		1620	
1600		1590		1580		1570	
1550		1540		1530		1520	
1500		1490		1480		1470	
1450		1440		1430		1420	
1400		1390		1380		1370	
1350		1340		1330		1320	
1300		1290		1280		1270	
1250		1240		1230		1220	
1200		1190		1180		1170	
1150		1140		1130		1120	
1100		1090		1080		1070	
1050		1040		1030		1020	
1000		990		980		970	
950		940		930		920	
900		890		880		870	
850		840		830		820	
800		790		780		770	
750		740		730		720	
700		690		680		670	
650		640		630		620	
600		590		580		570	
550		540		530		520	
500		490		480		470	
450		440		430		420	
400		390		380		370	
350		340		330		320	
300		290		280		270	
250		240		230		220	
200		190		180		170	
150		140		130		120	
100		90		80		70	
50		40		30		20	
10		0					

NC-1, 03 DEC 2020 to 31 DEC 2020

NC-1, 03 DEC 2020 to 31 DEC 2020