

WAAS CH 82518 W35A	APP CRS 354°	Rwy Idg TDZE Apt Elev	3898 822 824
--	------------------------	-----------------------------	---

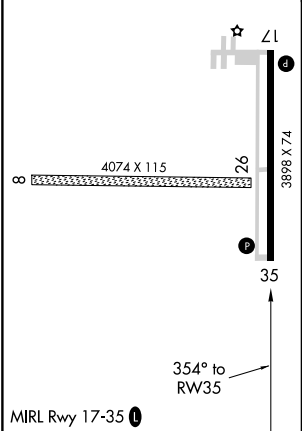
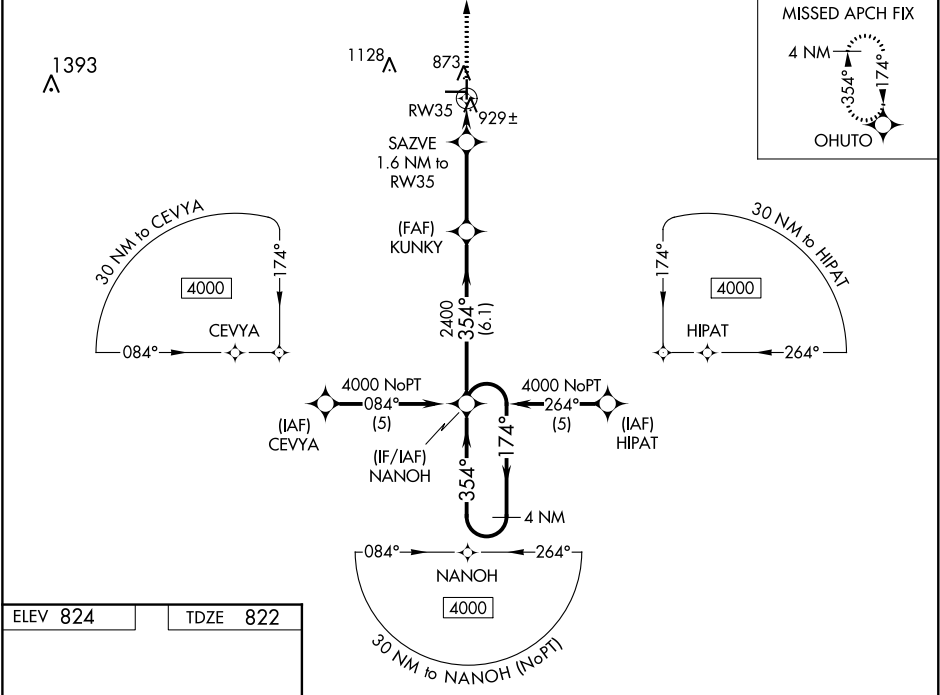
RNAV (GPS) RWY 35

HUTSON FIELD (GAF')

⚠ For uncompensated Baro-VNAV systems, LNAV/VNAV NA below -16°C (4°F) or above 54°C (130°F). DME/DME RNP-0.3 NA. Visibility reduction by helicopters NA. When local altimeter setting not received, use Grand Forks Intl altimeter setting and increase all DA 69 feet and all MDA 80 feet. Increase LPV and LNAV/VNAV all Cnts and LNAV Cat C visibility ¼ mile. Baro-VNAV NA when using Grand Forks Intl altimeter setting.

MISSED APPROACH: Climb to 4000 direct OHUTO and hold, continue climb-in-hold to 4000.

AWOS-3 118.625	GRAND FORKS APP CON 118.1 318.1	UNICOM 122.8 (CTAF) 1
--------------------------	---	---------------------------------



4000 ↑		OHUTO 		VGSI and RNAV glidepath not coincident (VGSI Angle 3.00/TCH 26).			4 NM Holding Pattern		
*LNAV only.		SAZVE 1.6 NM to RW35		KUNKY 2400		NANOH		174° → 4000 ← 354°	
		*1360		2400		GP 3.00° TCH 40			
1.6 NM		3.2 NM		6.1 NM					
CATEGORY		A		B		C		D	
LPV DA		1072-1		250 (300-1)				NA	
LNAV/ VNAV DA		1199-1¼		377 (400-1¼)				NA	
LNAV MDA		1180-1		358 (400-1)				NA	
CIRCLING		1340-1		516 (600-1)		1340-1½ 516 (600-1½)		NA	