

WAAS CH <b>5353B</b> <b>W33A</b>	APP CRS <b>328°</b>	Rwy Idg TDZE Apt Elev	<b>3999</b> <b>1067</b> <b>1067</b>
--	------------------------	-----------------------------	---

RNAV (GPS) RWY 33

ST JAMES MUNI (JYG)

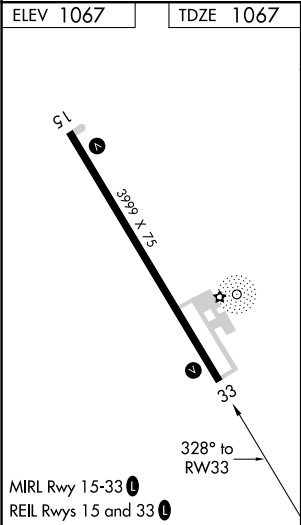
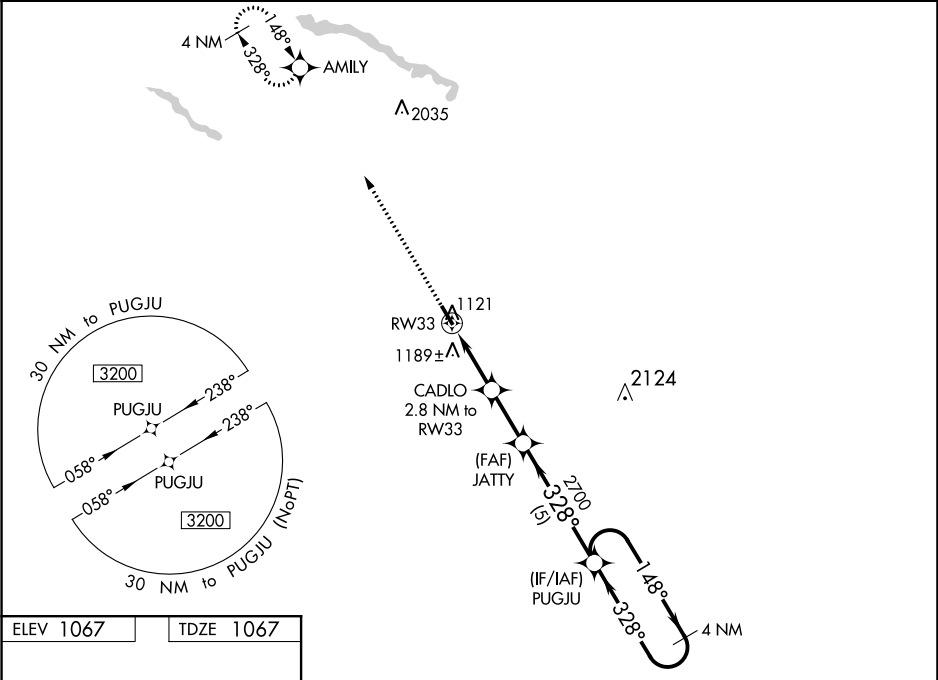
⚠

⚠

For uncompensated Baro-VNAV systems, procedure NA below -17°C (2°F) or above 54°C (130°F). DME/DME RNP-0.3 NA. Helicopter visibility reduction below ¾ SM NA. Baro-VNAV and VDP NA when using New Ulm altimeter setting. When local altimeter setting not received, use New Ulm, MN altimeter setting and increase LPV DA to 1398 feet, LNAV/VNAV DA to 1549 feet, and all MDA 60 feet.

MISSED APPROACH: Climb to 3200 direct AMILY and hold.

AWOS-3 <b>123.7</b>	MINNEAPOLIS CENTER <b>127.75 257.7</b>	GCO <b>121.725</b>	CTAF <b>122.9</b>
------------------------	---	-----------------------	----------------------



3200	AMILY	VGSI and descent angles not coincident (VGSI Angle 3.00/TCH 24).			
* LNAV only		CADLO 2.8 NM to RW33	JATTY 2700	PUGJU 4 NM Holding Pattern	
* 1.1 NM to RW33		1980*	2700	3200	GP 3.00° TCH 40
1.1 NM		1.7 NM	2.2 NM	5 NM	
CATEGORY	A	B	C	D	
LPV DA	1343-1	276 (300-1)	NA		
LNAV/VNAV DA	1494-1½	427 (500-1½)	NA		
LNAV MDA	1440-1	373 (400-1)	NA		
CIRCLING	1500-1 433 (500-1)	1520-1 453 (500-1)	NA		