

NDB FOZ
345

APP CRS
160°

Rwy Idg
TDZE
Apt Elev
3998
1351
1351

NDB RWY 15

BIGFORK MUNI (F'OZ)

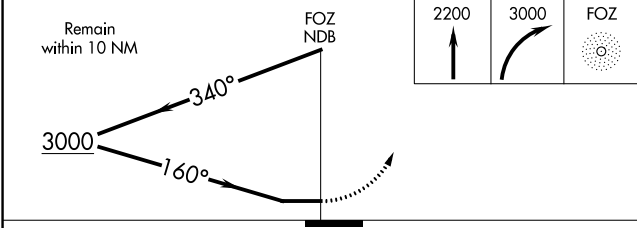
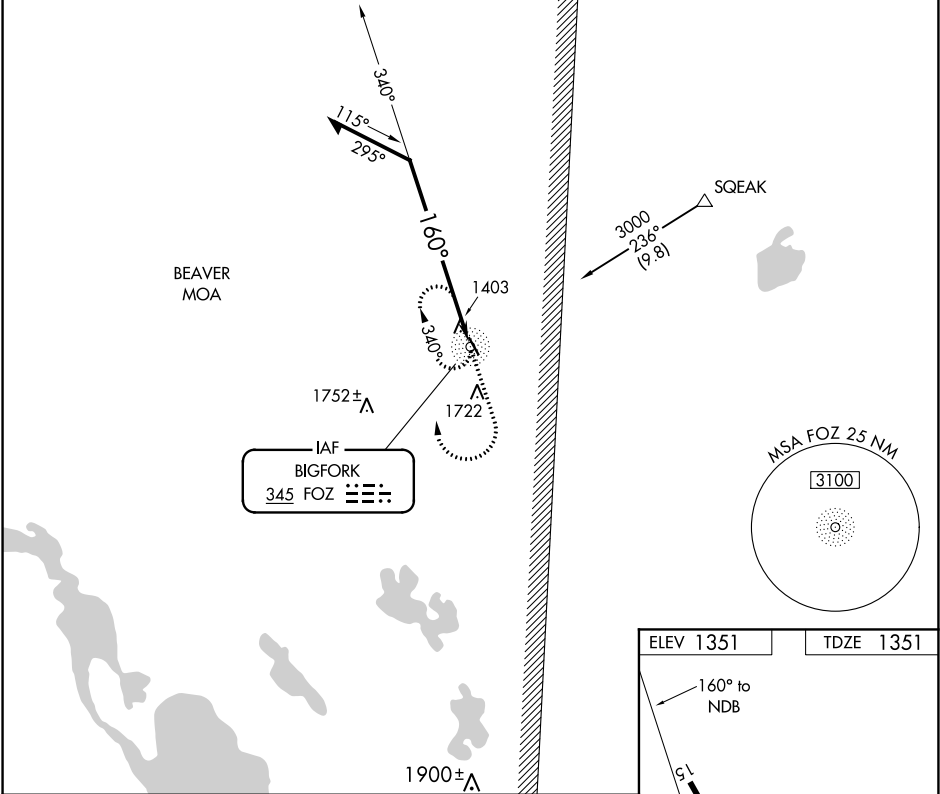
▼

▲ NA

Procedure not authorized when BEAVER MOA is active. Night landing Rwy 33 NA. Helicopter visibility reduction below ¼ SM NA. When local altimeter setting not received, use Grand Rapids altimeter setting and increase all MDA 100 feet.

MISSED APPROACH: Climb to 2200 then climbing right turn to 3000 direct FOZ NDB and hold.

AWOS-3 345	MINNEAPOLIS CENTER 127.9 281.45	GCO 121.725	CTAF 122.9 0
----------------------	---	-----------------------	------------------------



CATEGORY	A	B	C	D
S-15	1840-1	489 (500-1)	NA	
CIRCLING	1840-1	489 (500-1)	NA	

ELEV 1351

TDZE 1351

160° to NDB

340°

3998 x 75

33

MIRL Rwy 15-33 0