

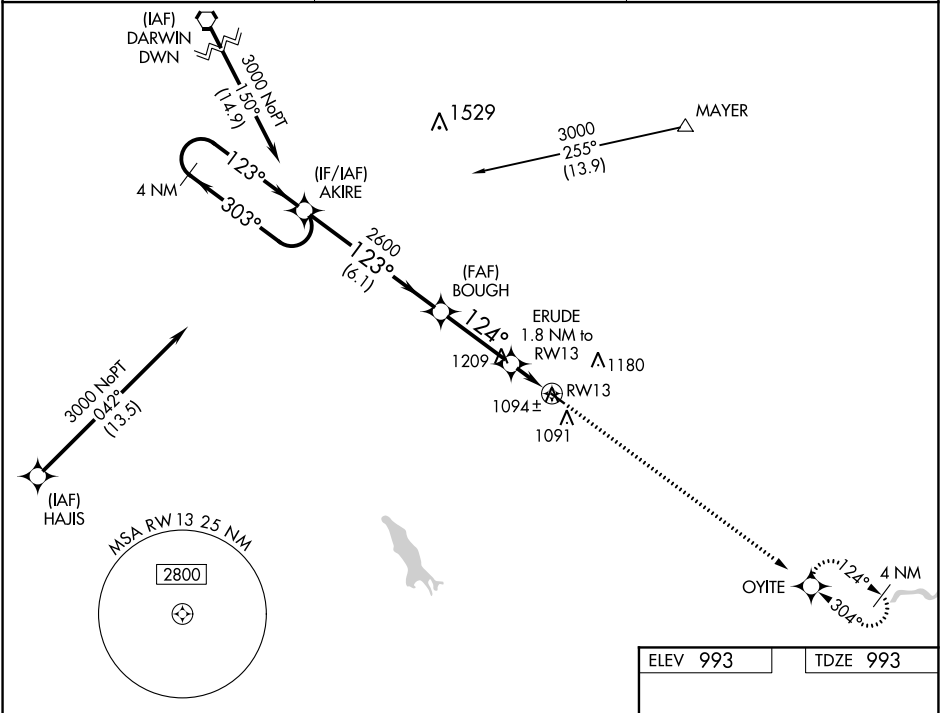
WAAS CH 99437 W13A	APP CRS 124°	Rwy Idg TDZE 993 Apt Elev 993
--	------------------------	---

RNAV (GPS) RWY 13

GLENCOE MUNI (GYL)

<div> <div></div> <div> For uncompensated Baro-VNAV systems, LNAV/VNAV NA below -16°C (4°F) or above 54°C (130°F). DME/DME RNP-0.3 NA. Rwy 13 helicopter visibility reduction below ¾ SM NA. </div> </div>	<div> MISSED APPROACH: Climb to 3000 direct OYITE and hold. </div>
--	--

AWOS-3 119.625	MINNEAPOLIS APP CON 134.7 284.7	UNICOM 122.8 (CTAF) 0
--------------------------	---	---------------------------------



4 NM Holding Pattern AKIRE		VGSI and RNAV glidepath not coincident (VGSI Angle 3.00/TCH 28).		3000 OYITE
3000 ← 303° GP 3.00° TCH 40		123° → 2600	123° BOUGH 2600	124° ERUDE 1.8 NM to RWY 13 *1.1 NM to RWY 13 RWY 13
6.1 NM		3.1 NM	0.7 NM	1.1 NM
CATEGORY	A	B	C	D
LPV DA	1270-1	277 (300-1)	NA	
LNAV/VNAV DA	1246-1	253 (300-1)	NA	
LNAV MDA	1360-1	367 (400-1)	NA	
CIRCLING	1420-1 427 (500-1)	1480-1 487 (500-1)	NA	

