

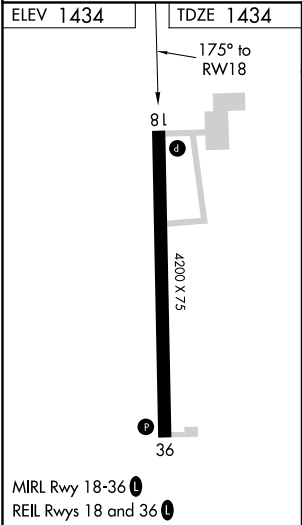
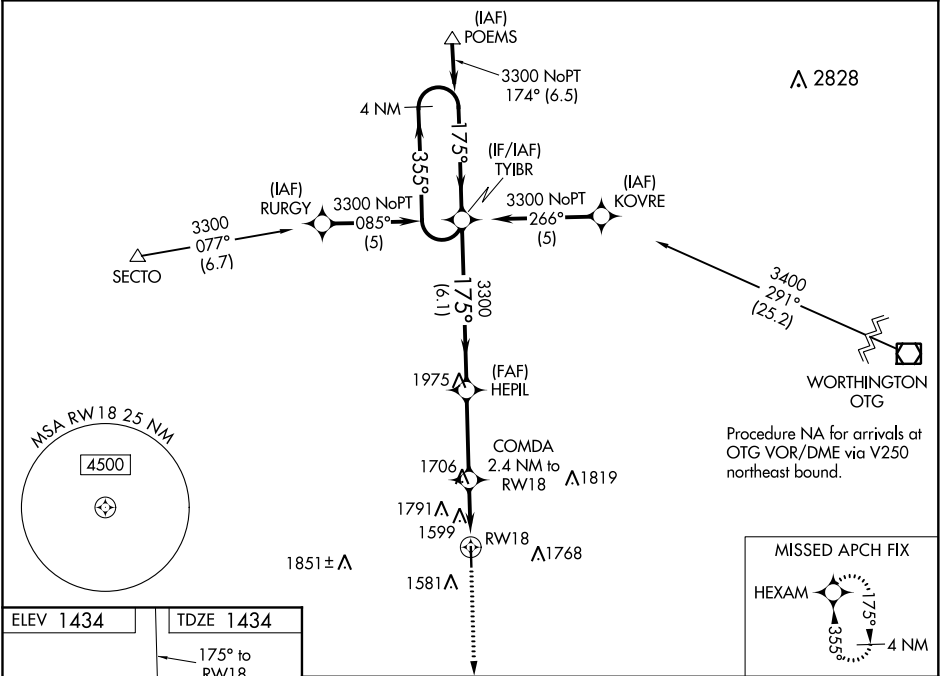
WAAS CH 86317 W18A	APP CRS 175°	Rwy Idg 4200 TDZE 1434 Apt Elev 1434
---------------------------------	------------------------	---

RNAV (GPS) RWY 18
QUENTIN AANENSON FIELD (LYV)

NA For uncompensated Baro-VNAV systems, LNAV/VNAV NA below -17°C (2°F) or above 46°C (114°F). DME/DME RNP-0.3 NA. When local altimeter setting not received, use Pipestone altimeter setting and increase all DA 94 feet and all MDA 100 feet. Increase LNAV/VNAV all Cats, LNAV and Circling Cat C/D visibility ¼ mile. Baro-VNAV and VDP NA when using Pipestone altimeter setting.

MISSED APPROACH: Climb to 3200 direct HEXAM and hold.

AWOS-3 119.825	SIOUX FALLS APP CON * 125.8 284.725	UNICOM 122.7 (CTAF) 0
--------------------------	---	---------------------------------



VGSI and RNAV glidepath not coincident (VGSI Angle 3.00/TCH 28).				
4 NM Holding Pattern TYBR HEPIL COMDA 2.4 NM to RW18				
3300 ← 355° 175° → 3300				
GP 3.00° TCH 50				
6.1 NM 3.2 NM 0.8 NM 1.6 NM				
CATEGORY	A	B	C	D
LPV DA	1634-1 200 (200-1)			
LNAV/VNAV DA	2131-2½ 697 (700-2½)			
LNAV MDA	1960-1	526 (600-1)	1960-1½ 526 (600-1½)	1960-1¾ 526 (600-1¾)
CIRCLING	1960-1	526 (600-1)	2140-2 706 (800-2)	2140-2½ 706 (800-2½)

NC-1, 03 DEC 2020 to 31 DEC 2020

NC-1, 03 DEC 2020 to 31 DEC 2020