

WAAS CH <b>56418</b> <b>W12A</b>	APP CRS <b>118°</b>	Rwy Idg <b>4648</b> TDZE <b>1194</b> Apt Elev <b>1194</b>
--	------------------------	---

RNAV (GPS) RWY 12

MYERS FIELD (CNB)

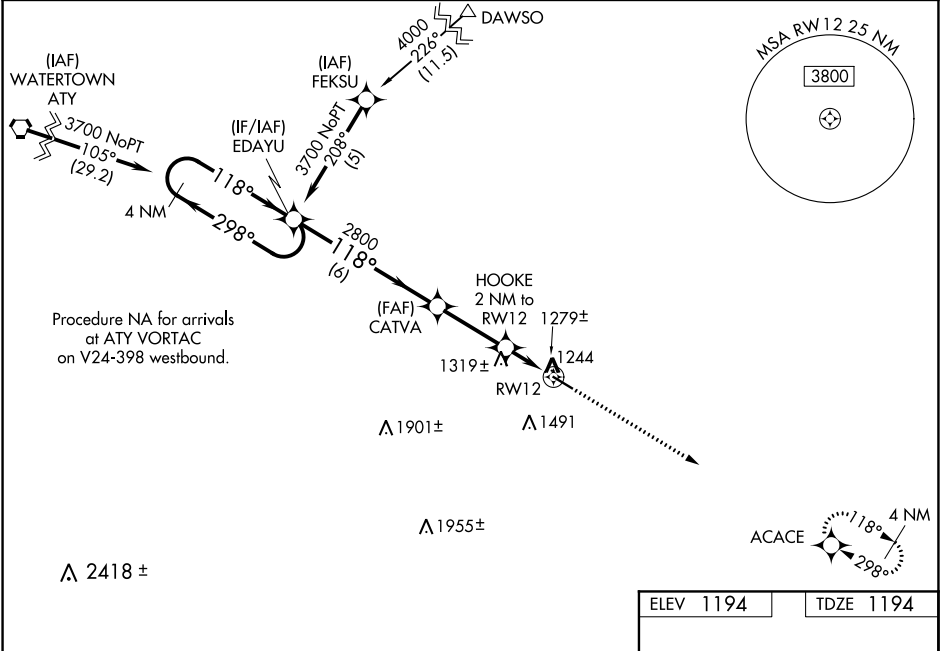
⚠

⚠

For uncompensated Baro-VNAV systems, LNAV/VNAV NA below -17°C (2°F) or above 46°C (114°F). DME/DME RNP-0.3 NA. Visibility reduction by helicopters NA. VDP NA with Lac Qui Parle County altimeter setting. Baro-VNAV NA when using Lac Qui Parle County altimeter setting. When local altimeter setting not received, use Lac Qui Parle County altimeter setting and increase all DA 53 feet, and all MDA 60 feet, increase LNAV/VNAV all Cats visibility ¼ mile, LNAV Cats C and D visibility ¼ mile.

MISSED APPROACH:  
Climb to 3700 direct  
ACACE and hold.

AWOS-3 <b>118.575</b>	MINNEAPOLIS CENTER <b>128.5 306.2</b>	CTAF <b>122.9 0</b>
--------------------------	--	------------------------



VGSI and RNAV glidepath not coincident (VGSI Angle 3.00/TCH 25).				
4 NM Holding Pattern		EDAYU	CATVA	HOOKE 2 NM to RW12
3700 ← 298° 118° →		2800	2800	118° to RW12
GP 3.00° TCH 40			*1860	*1.1 NM to RW12
		6 NM	2.9 NM	0.9 1.1 NM
CATEGORY	A	B	C	D
LPV DA	1444-1 250 (300-1)			
LNAV/VNAV DA	1598-1½ 404 (500-1½)			
LNAV MDA	1580-1 386 (400-1)		1580-1¼ 386 (400-1¼)	
CIRCLING	1700-1 506 (600-1)		1700-1½ 506 (600-1½)	1800-2 606 (700-2)

ELEV 1194 TDZE 1194

118° to RW12

4648 X 75

30

MIRL Rwy 12-30 0  
REIL Rwy 12 and 30 0