

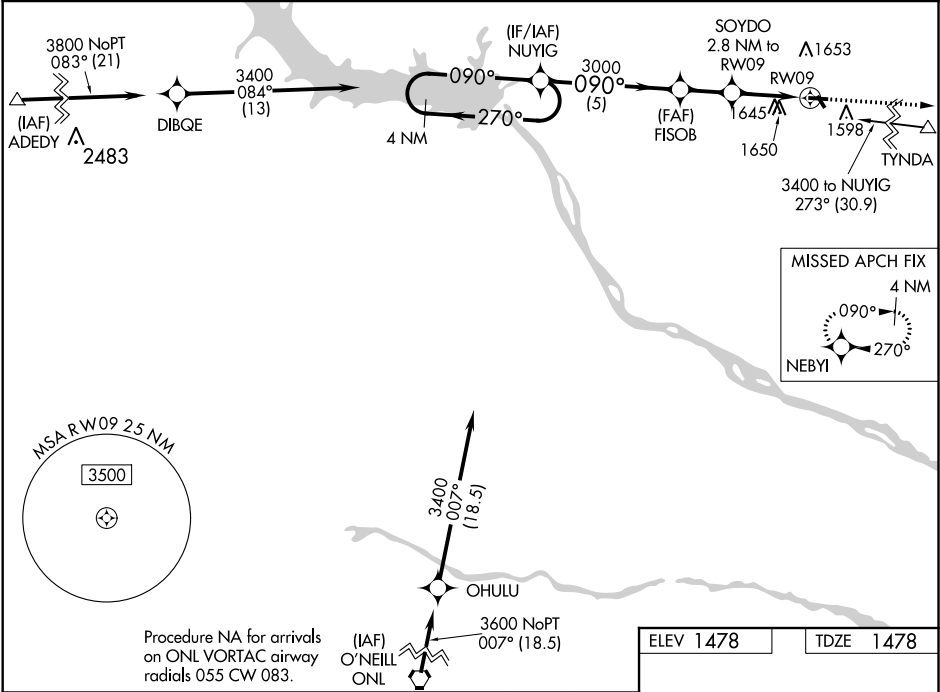
WAAS CH <b>53334</b> <b>W09A</b>	APP CRS <b>090°</b>	Rwy Idg TDZE <b>1478</b> Apt Elev <b>1478</b>
--	------------------------	---

RNAV (GPS) RWY 9  
WAGNER MUNI (AGZ)

**NA** Circling NA to Rwy's 14 and 32. Baro-VNAV NA. DME/DME RNP-0.3 NA. Use Yankton altimeter setting; when not received use O'Neill altimeter setting and increase all DA 51 feet, all MDA 60 feet and increase LPV all Cats visibility ½ mile, and LNAV/VNAV all Cats visibility ½ mile.

MISSED APPROACH: Climb to 3400 direct NEBYI and hold.

YKN AWOS-3PT <b>119.05</b>	MINNEAPOLIS CENTER <b>128.0 257.95</b>	AUNICOM <b>122.8 (CTAF) 0</b>
-------------------------------	---	----------------------------------



4 NM

Holding Pattern

VGSI and RNAV glidepath not coincident (VGSI Angle 3.00/TCH 26).

3400

NEBYI

3400

← 270°

090° →

GP 3.00°

TCH 40

NUYIG

FISOB

SOYDO

2.8 NM to RWY09

3000

3000

\*2400

5 NM

1.9 NM

2.8 NM

3400

↑

NEBYI

✦

\*LNAV only.

090° to RWY09

3500 X 60

2252 X 150

0.3% UP

CATEGORY	A	B	C	D
LPV DA	1847-1¼	369 (400-1¼)	NA	
LNAV/VNAV DA	2053-2	575 (600-2)	NA	
LNAV MDA	2020-1	542 (600-1)	NA	
CIRCLING	2080-1	602 (700-1)	NA	

MIRL Rwy 9-27

3400

↑

NEBYI

✦

\*LNAV only.

090° to RWY09

3500 X 60

2252 X 150

0.3% UP

MIRL Rwy 9-27 0

NC-1, 03 DEC 2020 to 31 DEC 2020

NC-1, 03 DEC 2020 to 31 DEC 2020