

WAAS
CH **81839**
W13A

APP CRS
133°

Rwy Idg
TDZE **2948**
Apt Elev **2965**

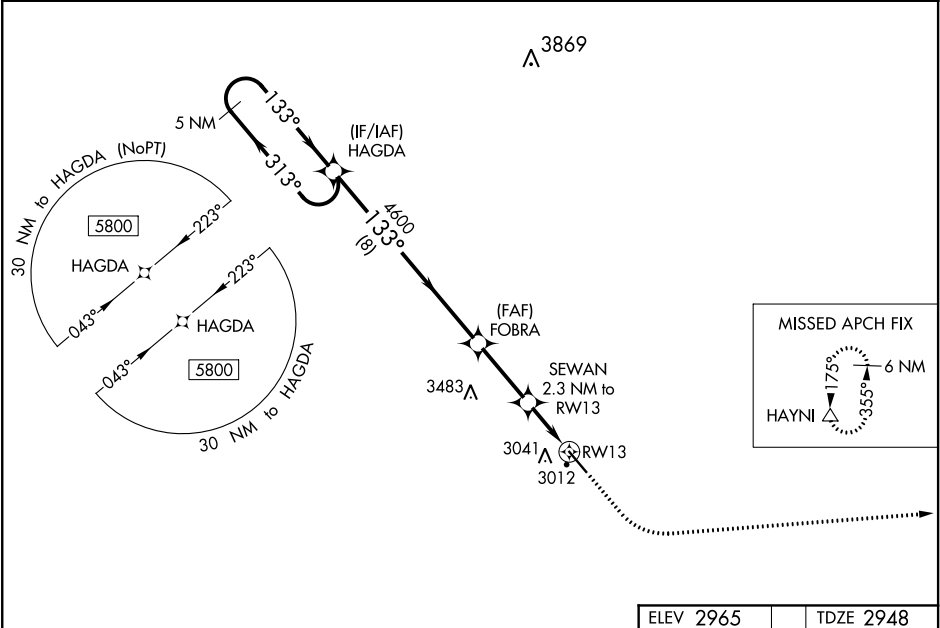
RNAV (GPS) RWY 13

BOWMAN RGNL (BWW)

For uncompensated Baro-VNAV systems, LNAV/VNAV NA below -20°C (-4°F) or above 54°C (130°F). DME/DME RNP-0.3 NA. When local altimeter setting not received, use Hettinger altimeter setting and increase all DA 102 feet, and all MDA 120 feet; increase LPV and LNAV/VNAV visibility ¼ mile all Cats, and LNAV Cat C visibility ⅓ mile. Baro-VNAV and VDP NA when using Hettinger altimeter setting.

MISSED APPROACH:
Climb to 3400 then climbing left turn to 6000 direct HAYNI and hold.

AWOS-3PT 118.075	SALT LAKE CITY CENTER 126.85 305.2	UNICOM 122.8 (CTAF) 1
----------------------------	--	---------------------------------



5 NM Holding Pattern

HAGDA

5800

GP 3.00° TCH 40

313°

133°

133°

4600

8 NM

2.8 NM

1.4 NM

0.9 NM

RWY 13

31

3400

6000

HAYNI

* LNAV only

SEWAN 2.3 NM to RWY 13

* 0.9 NM to RWY 13

5701 x 75

0.35 UP

ELEV 2965

TDZE 2948

CATEGORY	A	B	C	D
LPV DA		3198-1	250 (300-1)	
LNAV/VNAV DA		3198-1	250 (300-1)	
LNAV MDA		3280-1	332 (400-1)	
CIRCLING	3380-1 415 (500-1)	3420-1 455 (500-1)	3580-1¾ 615 (700-1¾)	3580-2 615 (700-2)

REIL Rwy 13 and 31 1
MIRL Rwy 13-31 1