

WAAS CH 42538 W31A	APP CRS 313°	Rwy Idg 5701 TDZE 2965 Apt Elev 2965
--	------------------------	---

RNAV (GPS) RWY 31

BOWMAN RGNL (BWW)

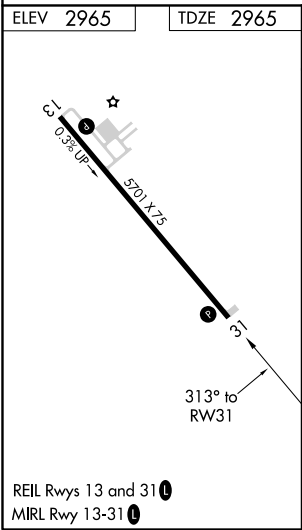
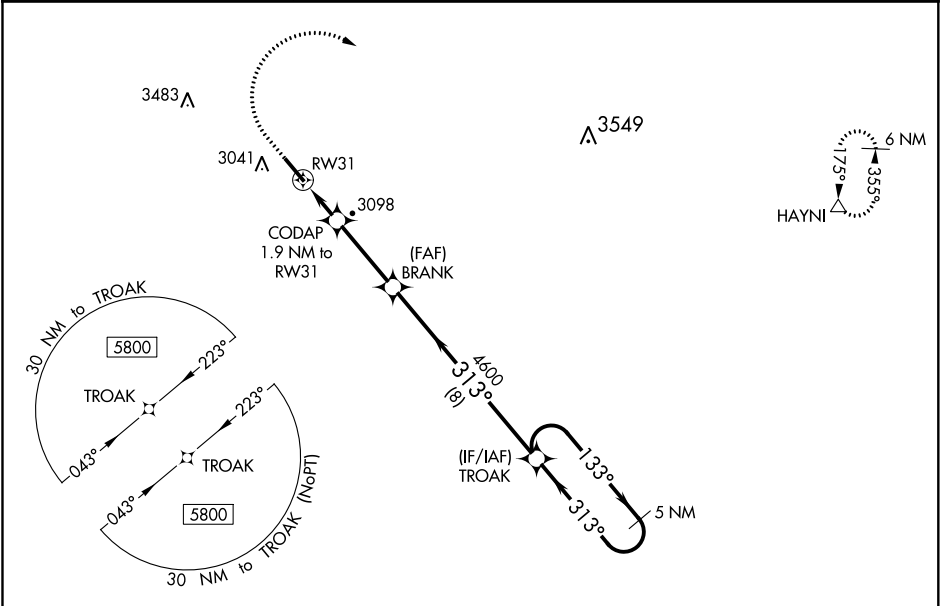
⚠

⚠

For uncompensated Baro-VNAV systems, LNAV/VNAV NA below -20°C (-4°F) or above 54°C (130°F). DME/DME RNP-0.3 NA. When local altimeter setting not received, use Hettinger altimeter setting and increase all DA 102 feet, and all MDA 120 feet; increase LPV and LNAV/VNAV visibility ¼ mile all Cots, increase LNAV Cat C visibility ½ mile. Baro-VNAV and VDP NA when using Hettinger altimeter setting.

MISSED APPROACH:
Climb to 3500 then climbing right turn to 6000 direct HAYNI and hold.

AWOS-3PT 118.075	SALT LAKE CITY CENTER 126.85 305.2	UNICOM 122.8 (CTAF)
----------------------------	--	-------------------------------



	3500	6000	HAYNI	
*LNAV only				
	RW31	CODAP 1.9 NM to RW31	BRANK 4600	TROAK 5 NM Holding Pattern
		*1.1 NM to RW31	*3600	4600
				133° ←313°
				5800
				GP 3.00° TCH 40
	1.1 NM	0.8 NM	3.1 NM	8 NM
CATEGORY	A	B	C	D
LPV DA		3215-1	250 (300-1)	
LNAV/VNAV DA		3227-1	262 (300-1)	
LNAV MDA	3360-1	395 (400-1)	3360-1½	395 (400-1½)
CIRCLING	3380-1 415 (500-1)	3420-1 455 (500-1)	3580-1¾ 615 (700-1¾)	3580-2 615 (700-2)