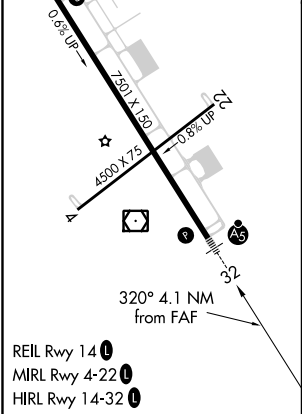
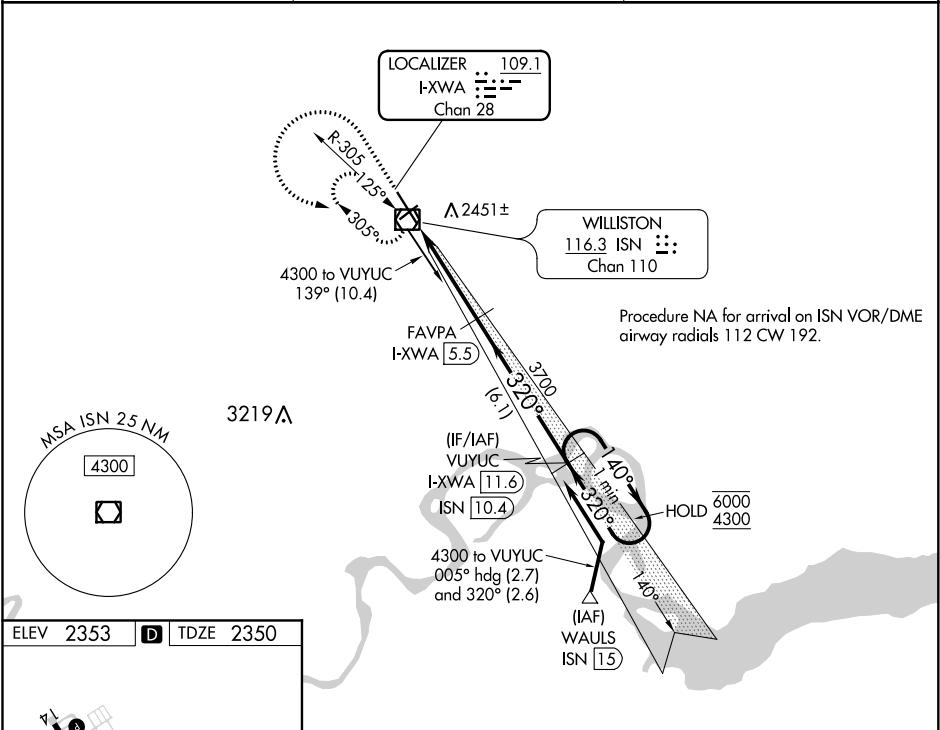


LOC/DME I-XWA	APP CRS	Rwy ldg
109.1	320°	7501
Chan 28		TDZE
		2350
		Apt Elev
		2353

ILS or LOC RWY 32
WILLISTON BASIN INTL (XWA)

DME required.	MALSR	MISSED APPROACH: Climb to 3500 then climbing left turn to 4300 direct ISN VOR/DME and hold, continue climb-in-hold to 4300.
For inop ALS, increase S-LOC 32 Cat C/D visibility to ½ SM.		

ASOS 125.925	SALT LAKE CITY CENTER 126.85 305.2	UNICOM 122.8 (CTAF) 0
------------------------	--	---------------------------------



3500	4300	ISN	VUYUC I-XWA 11.6	One Minute Holding Pattern
		FAVPA I-XWA 5.5		
*LOC only	*I-XWA 2.2	3700	140° → 6000	
I-XWA 1.4		320° ← 4300		
0.8 NM	3.3 NM	6.1 NM	GS 3.00°	TCH 50
CATEGORY	A	B	C	D
S-ILS 32	2550-½	200 (200-½)		
S-LOC 32	2660-½	310 (400-½)		
CIRCLING	2760-1 407 (500-1)	2820-1 467 (500-1)	2820-1½ 467 (500-1½)	2920-2 567 (600-2)

NC-1, 03 DEC 2020 to 31 DEC 2020

NC-1, 03 DEC 2020 to 31 DEC 2020