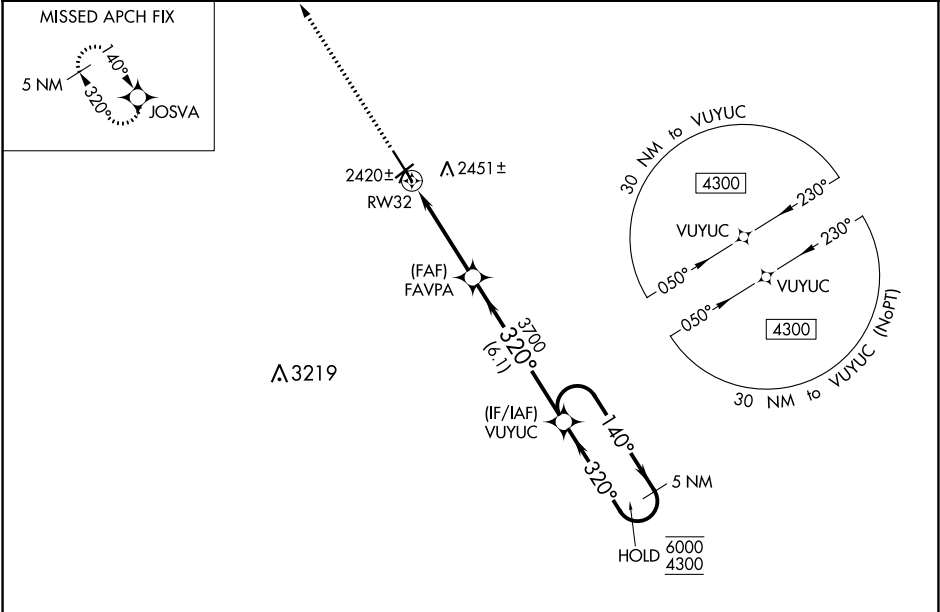


WAAS CH 78043 W32A	APP CRS 320°	Rwy Idg 7501 TDZE 2350 Apt Elev 2353
--	------------------------	---

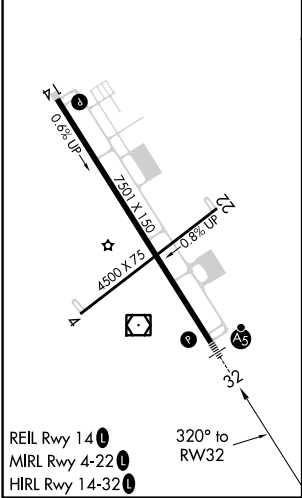
RNAV (GPS) RWY 32
WILLISTON BASIN INTL (XWA)

RNP APCH. ▼ For uncompensated Baro-VNAV systems, LNAV/VNAV NA below -19°C or above 54°C. For inop ALS, increase LNAV/VNAV all Cats visibility to ¾ SM. ▲	MALSR ALS	MISSED APPROACH: Climb to 4300 direct JOSVA and hold.
--	--------------	---

ASOS 125.925	SALT LAKE CITY CENTER 126.85 305.2	UNICOM 122.8 (CTAF) 0
------------------------	--	---------------------------------



ELEV 2353	D	TDZE 2350
------------------	----------	------------------



4300	JOSVA	FAVPA	VUYUC	5 NM Holding Pattern
* LNAV only	* 0.9 NM to RW32	3700	140° → 6000 ← 320° 4300	GP 3.00° TCH 50
0.9 NM	3.2 NM	6.1 NM		
CATEGORY	A	B	C	D
LPV DA		2550-½	200 (200-½)	
LNAV/VNAV DA		2600-½	250 (300-½)	
LNAV MDA		2680-½	330 (400-½)	
CIRCLING	2760-1 407 (500-1)	2820-1 467 (500-1)	2820-1½ 467 (500-1½)	2920-2 567 (600-2)

NC-1, 03 DEC 2020 to 31 DEC 2020

NC-1, 03 DEC 2020 to 31 DEC 2020