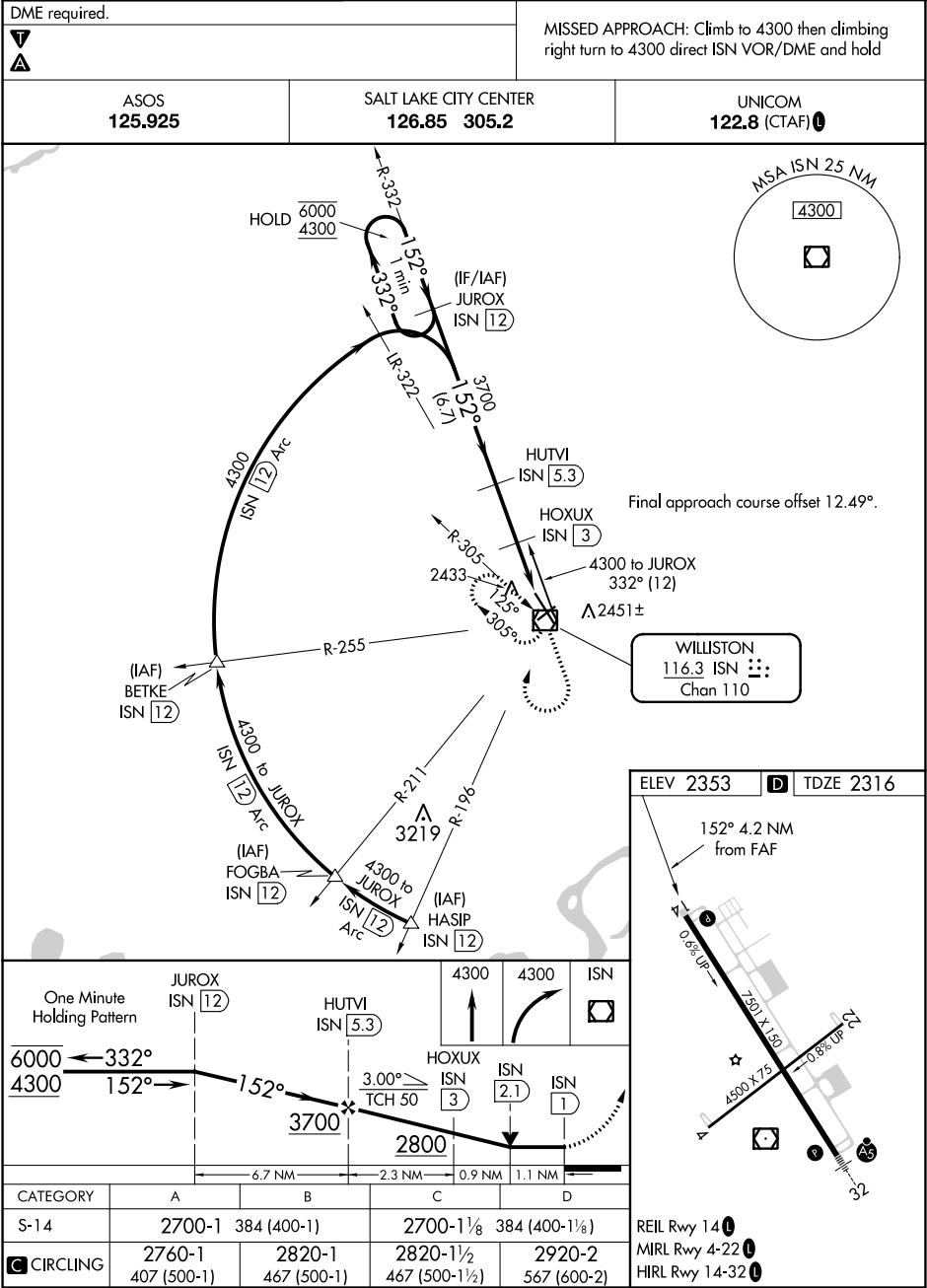


VOR/DME ISN	APP CRS	Rwy Idg	7501
116.3	152°	TDZE	2316
Chan 110		Apt Elev	2353

VOR RWY 14

WILLISTON BASIN INTL (XWA)



NC-1, 03 DEC 2020 to 31 DEC 2020

NC-1, 03 DEC 2020 to 31 DEC 2020