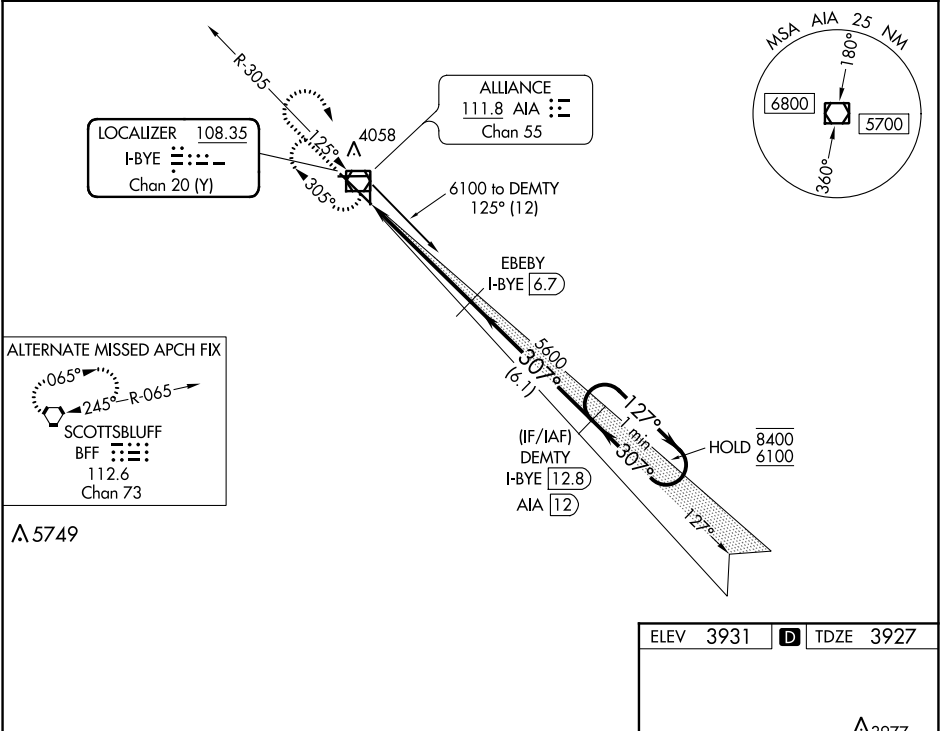


LOC/DME I-BYE <b>108.35</b> Chan 20 (Y)	APP CRS <b>307°</b>	Rwy Idg <b>9202</b> TDZE <b>3927</b> Apt Elev <b>3931</b>
---	------------------------	---

ILS or LOC RWY 30  
ALLIANCE MUNI (AIA)

DME required. NA For inop ALS, increase S-LOC 30 Cats C/D visibility to 1½ SM.	MALSR 	MISSED APPROACH: Climb to 5700 then right turn direct AIA VOR/DME and hold.
ASOS <b>135.075</b>	DENVER CENTER <b>127.95 338.2</b>	UNICOM <b>123.0 (CTAF) 0</b>



5700 ↑ AIA 				
*LOC only	*I-BYE [3.3]	5600	127° → 8400 ← 307° 6100	GS 3.00° TCH 55
I-BYE [1.7]				
CATEGORY	A	B	C	D
S-ILS 30	4127-½ 200 (200-½)			
S-LOC 30	4500-½ 573 (600-½)		4500-1¼ 573 (600-1¼)	
CIRCLING	4500-1 569 (600-1)		4520-1⅝ 589 (600-1⅝)	4520-2 589 (600-2)

