
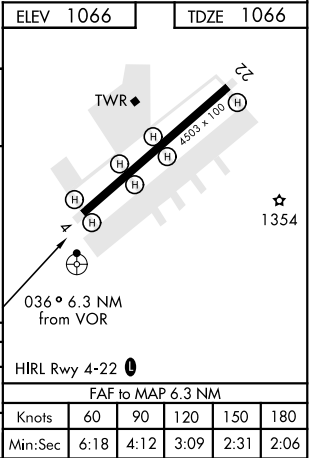
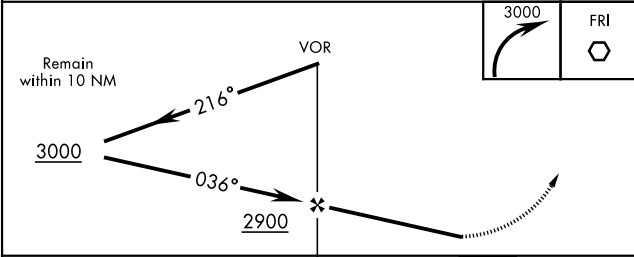
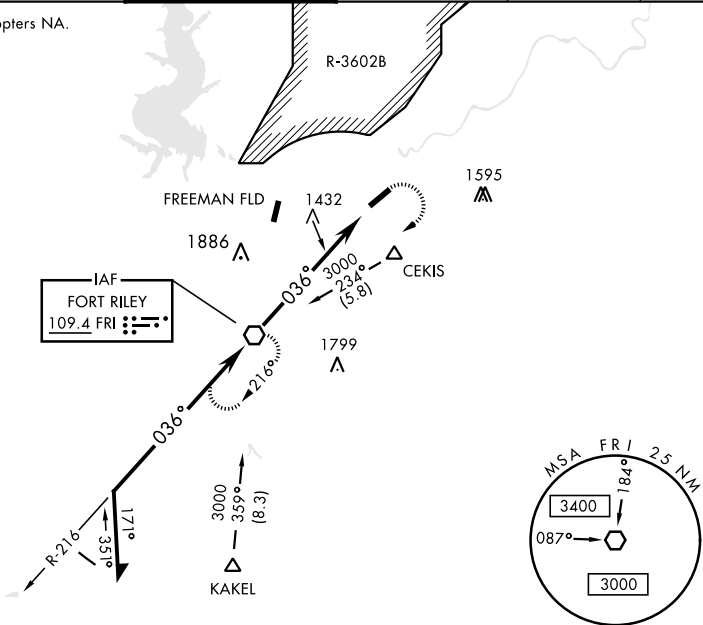


VOR RWY 4

VOR FRI 109.4	APCH CRS 036°	Rwy Idg 4503 TDZE 1066 Arpt Elev 1066	AL-155 [USA]		MARSHALL AAF (KFRI)	
* Circling not authorized NW of Rwy 4-22.			ODALS 	MISSED APPROACH: Climbing right turn to 3000 direct FRI VOR and hold.		
ATIS ★ 121.025	MARSHALL GCA 121.25 254.35		MARSHALL TOWER ★ 126.2 (CTAF) 0 248.65		GND CON 140.20 229.4	CLNC DEL 119.65 ASR/PAR

Visibility reduction by helicopters NA.



FORT RILEY, KANSAS	39° 03' N-96° 46' W	MARSHALL AAF (KFRI)
Amdt 19B 07NOV19		VOR RWY 4