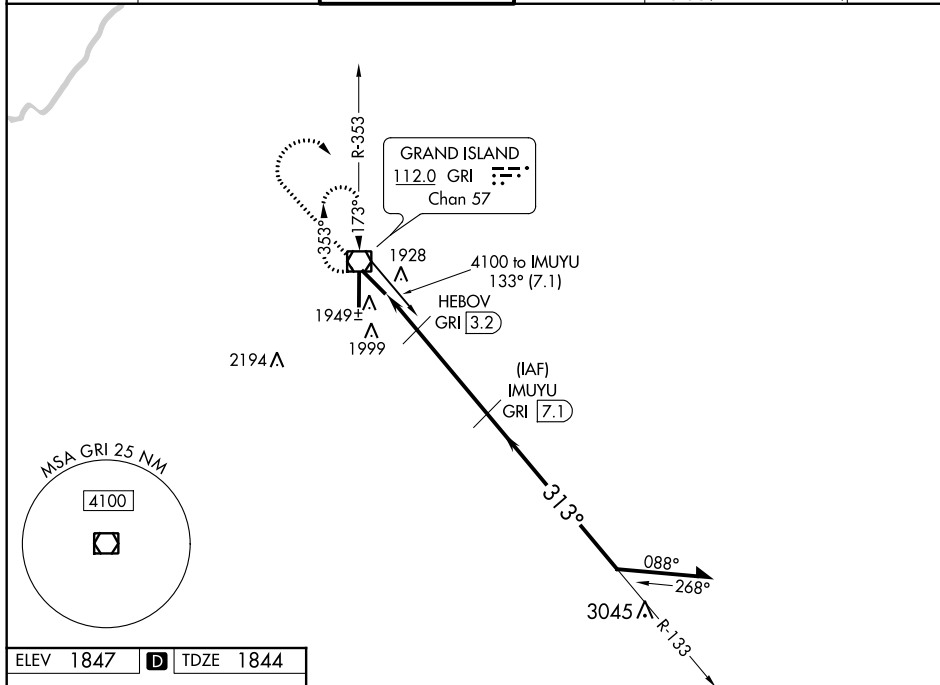


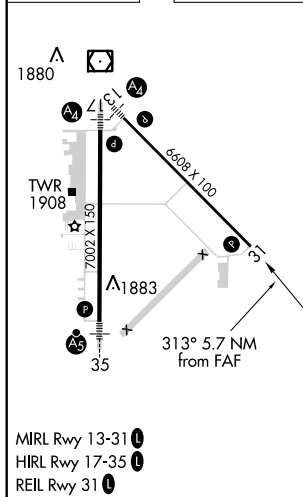
VOR/DME RWY 31  
CENTRAL NEBRASKA RGNL (GRI)

**MISSED APPROACH:** Climb to 2900 then climbing right turn to 3700 direct GRI VOR/DME and hold.

ATIS 127.4	MINNEAPOLIS CENTER 119.4 278.8	GRAND ISLAND TOWER★ 118.2 (CTAF) 0 259.3	GND CON 121.9 259.3	CLNC DEL 121.9 (when tower closed)	UNICOM 122.95
---------------	-----------------------------------	---------------------------------------------	------------------------	------------------------------------------	------------------



ELEV 1847	<b>D</b>	TDZE 1844
-----------	----------	-----------



CATEGORY	A		B		C	D
S-31	2200-1 356 (400-1)					2200-1¼ 356 (400-1¼)
CIRCLING	2300-1	453 (500-1)		2300-1½ 453 (500-1½)		2400-2 553 (600-2)