

VOR/DME GRI <b>112.0</b> Chan <b>57</b>	APP CRS <b>353°</b>	Rwy Idg TDZE Apt Elev	<b>7002</b> <b>1847</b> <b>1847</b>
---	------------------------	-----------------------------	---

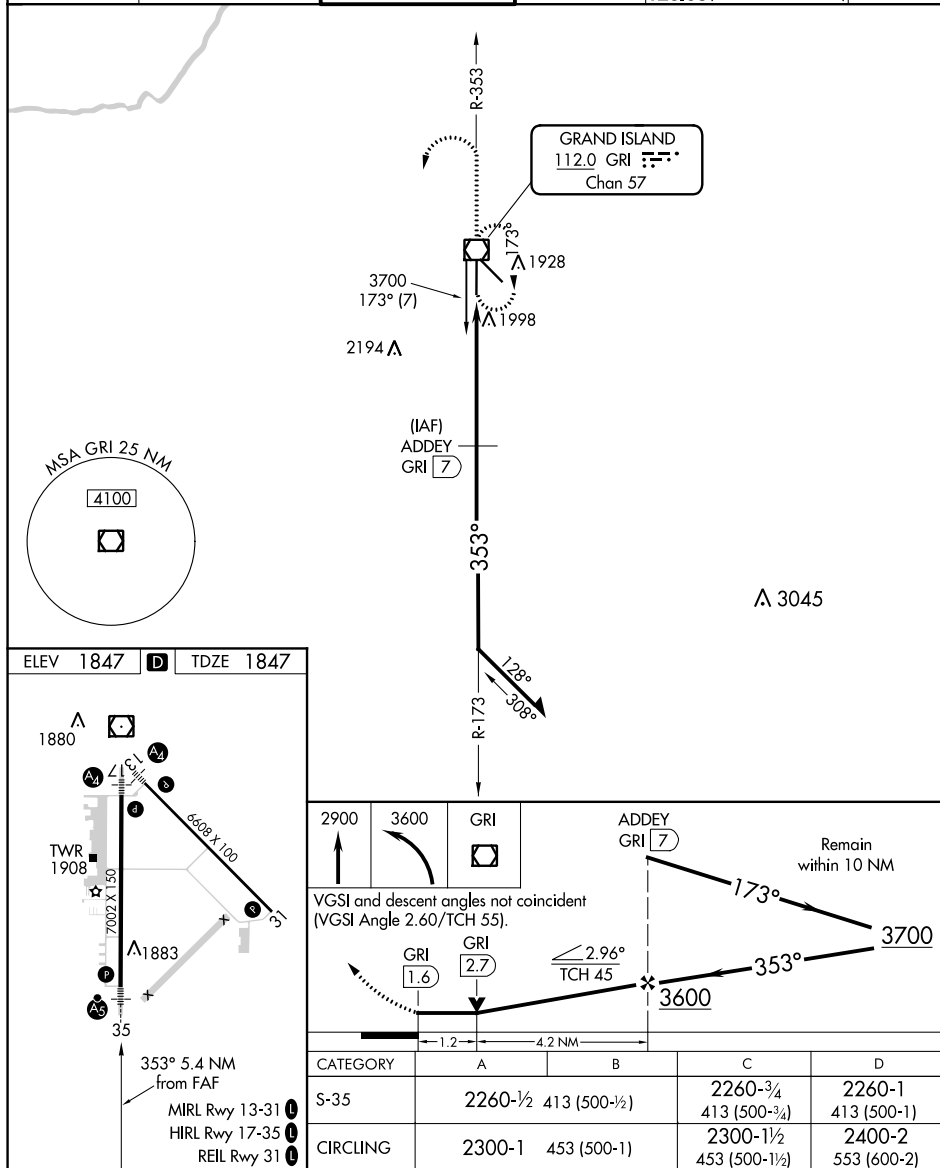
VOR/DME RWY 35  
CENTRAL NEBRASKA RGNL (GRI)

**T** VDP NA when using Aurora altimeter setting. When local altimeter setting not received, use Aurora altimeter setting and increase all MDA 60 feet. For inop MALSR, increase S-35 Cat D visibility to 1¼ mile.



**MISSED APPROACH:** Climb to 2900, then climbing left turn to 3600 direct GRI VOR/DME and hold.

ATIS 127.4	MINNEAPOLIS CENTER 119.4 278.8	GRAND ISLAND TOWER* 118.2 (CTAF) 0 259.3	GND CON 121.9 259.3	CINC DEL 121.9 126.05 (when tower closed)	UNICOM 122.95
---------------	-----------------------------------	---	------------------------	---	------------------



GRAND ISLAND, NEBRASKA

Amdt 15B 15SEP16

40°58'N-98°19'W

CENTRAL NEBRASKA RGNL (GRI)  
VOR/DME RWY 35

NC-2, 03 DEC 2020 to 31 DEC 2020