


WAAS CH <b>65710</b> <b>W35A</b>	APP CRS <b>352°</b>	Rwy Idg <b>7851</b> TDZE <b>1883</b> Apt Elev <b>1887</b>
--	------------------------	---

RNAV (GPS) RWY 35

GREAT BEND MUNI (GBD)

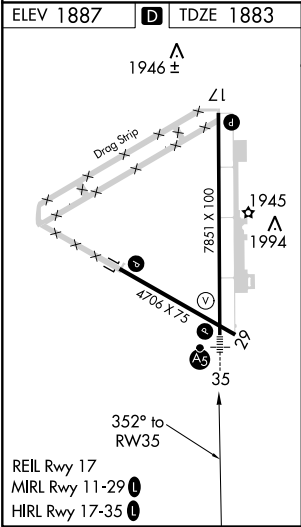
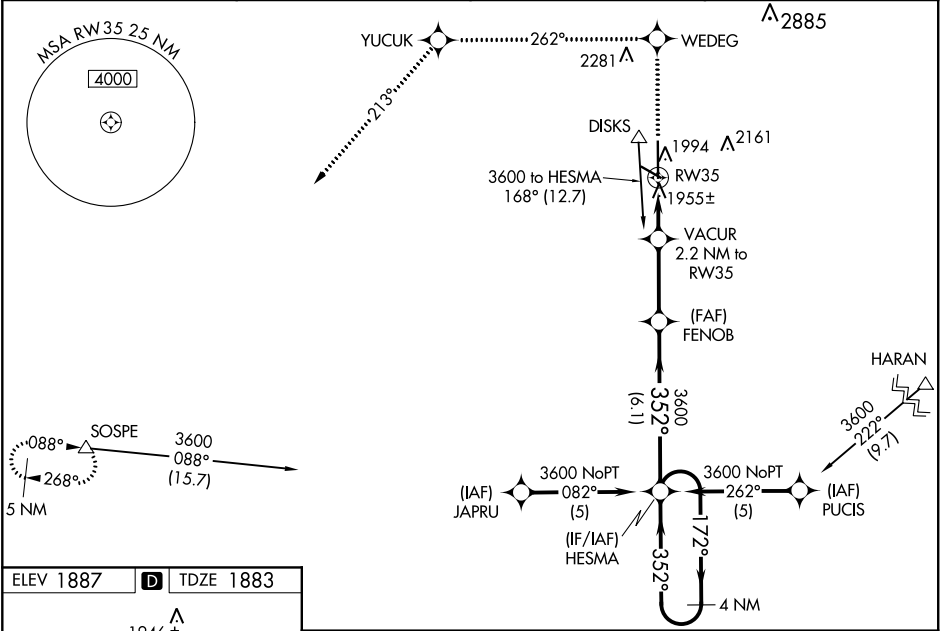
**⚠** For uncompensated Baro-VNAV systems, LNAV/VNAV NA below -18°C (0°F) or above 54°C (130°F). DME/DME RNP-0.3 NA. When local altimeter setting not received, use Russell Muni altimeter setting and increase all DA 77 feet and all MDA 80 feet. Increase LPV and LNAV/VNAV all Cats, LNAV Cat C and Circling Cat D visibility ¼ mile. For inoperative MALSR increase LPV all Cats visibility to 1 mile. For inoperative MALSR when using Russell Muni altimeter setting increase LPV all Cats and LNAV Cat D visibility to 1¼ mile. Baro-VNAV and VDP NA when using Russell Muni altimeter setting. Inoperative table does not apply to LNAV Cat D.

MALSR



MISSED APPROACH: Climb to 4500 direct WEDEG and via 262° track to YUCUK then via 213° track to SOSPE and hold.

AWOS-3PT <b>119.275</b>	KANSAS CITY CENTER <b>118.8 322.425</b>	UNICOM <b>122.8 (CTAF) 0</b>
----------------------------	--	---------------------------------



4500	WEDEG	YUCUK	SOSPE	
↑	262° tr	213° tr	△	
*LNAV only				
VACUR 2.2 NM to RW35				
*0.9 NM to RW35				
2620*				
0.9 1.3 NM 3 NM 6.1 NM				
FENOB				
HESMA 4 NM Holding Pattern				
172° → 3600 ← 352°				
GP 3.00° TCH 49				
CATEGORY	A	B	C	D
LPV DA	2171 - 1/2		288 (300-1/2)	
LNAV/VNAV DA	2222 - 3/4		339 (400-3/4)	
LNAV MDA	2220-1/2 337 (400-1/2)			2220-1 337 (400-1)
CIRCLING	2300-1 413 (500-1)	2340-1 453 (500-1)	2340-1 1/2 453 (500-1 1/2)	2500-2 613 (700-2)