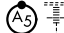
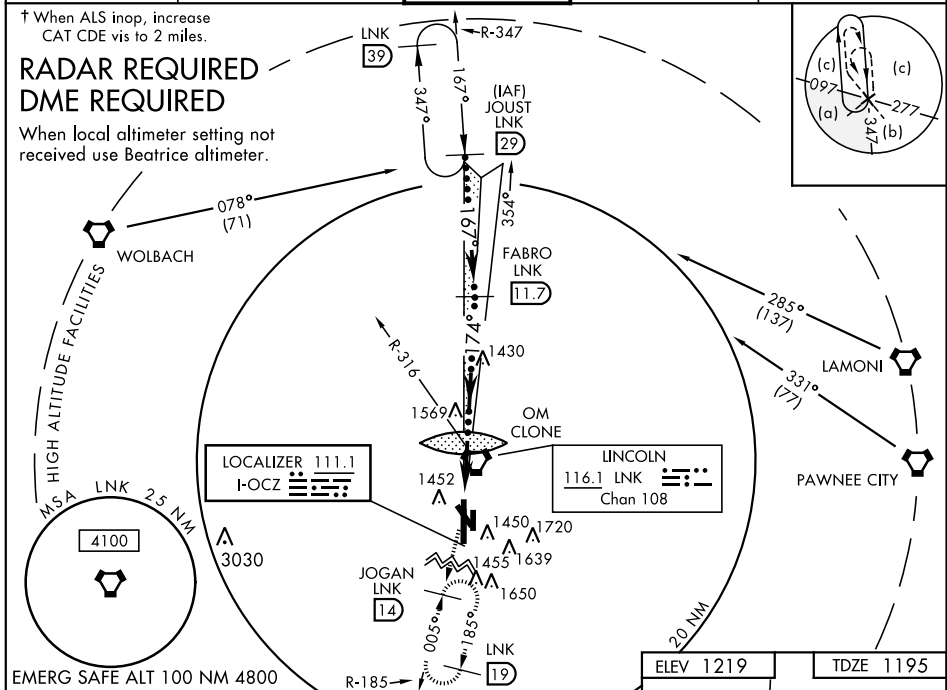


HI-ILS or LOC RWY 18

LOC I-OCZ 111.1	APCH CRS 174°	Rwy ldg 12,901 TDZE 1195 Arprt Elev 1219	JAL-232 [USAF]	LINCOLN (KLNK)
---------------------------	-------------------------	---	----------------	----------------

<p>▼ * When ALS inop, increase CAT CDE RVR to 40, vis to ¾ mile. ** When ALS inop, increase CAT CDE vis to 1¾ miles. *** When ALS inop, increase CAT CDE RVR to 45, vis to 7⁄8 mile.</p>	<p>MALSR </p>	<p>MISSED APPROACH: Climb to 3300 on LNK VORTAC R-185 to JOGAN (LNK 14 DME) and hold.</p>
--	---	--

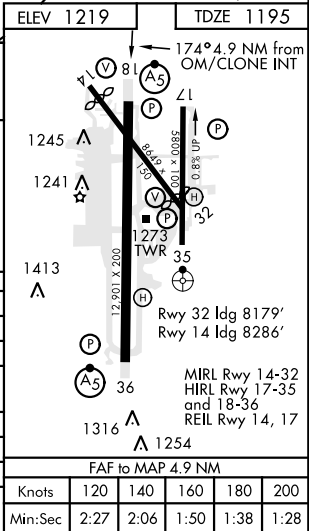
ATIS 118.05 290.9	OMAHA APP CON 124.0 270.3	LINCOLN TOWER ★ 118.5 253.5	GND CON 121.9 275.8	CLNC DEL 120.7 225.4
-----------------------------	-------------------------------------	---------------------------------------	-------------------------------	--------------------------------



JOUST R-347
FL180
16.7°
3100
17.4°
OM/CLONE INT R-316 LNK
2837
2900
4.9 NM
JOGAN LNK 14
VGSI and Glidepath not coincident.

CATEGORY	C	D	E
S-ILS 18 *	1395/24	200	(200-½)
S-LOC 18 **	1820-1¾	625	(700-1¾)
CIRCLING	1820-1¾	1820-2	2040-3
	601 (700-1¾)	601 (700-2)	821 (900-3)
BEATRICE ALTIMETER SETTING			
S-ILS 18 ***	1486/24	291	(200-½)
S-LOC 18 †	1920-1¾	725	(800-1¾)
CIRCLING	1920-2	1920-2¼	2140-3¼
	701 (800-2)	701 (800-2¼)	921 (1000-3¼)

174° 4.9 NM from OM/CLONE INT
1254
1241
1413
1273 TWR
1316
1254
Rwy 32 ldg 8179'
Rwy 14 ldg 8286'
MIRL Rwy 14-32
HIRL Rwy 17-35
and 18-36
REIL Rwy 14, 17
FAF to MAP 4.9 NM
Knots 120 140 160 180 200
Min:Sec 2:27 2:06 1:50 1:38 1:28



HI-ILS or LOC RWY 18