

LOC I-OCZ <b><u>111.1</u></b>	APP CRS <b>177°</b>	Rwy Idg <b>12901</b> TDZE <b>1195</b> Apt Elev <b>1219</b>
----------------------------------	------------------------	--

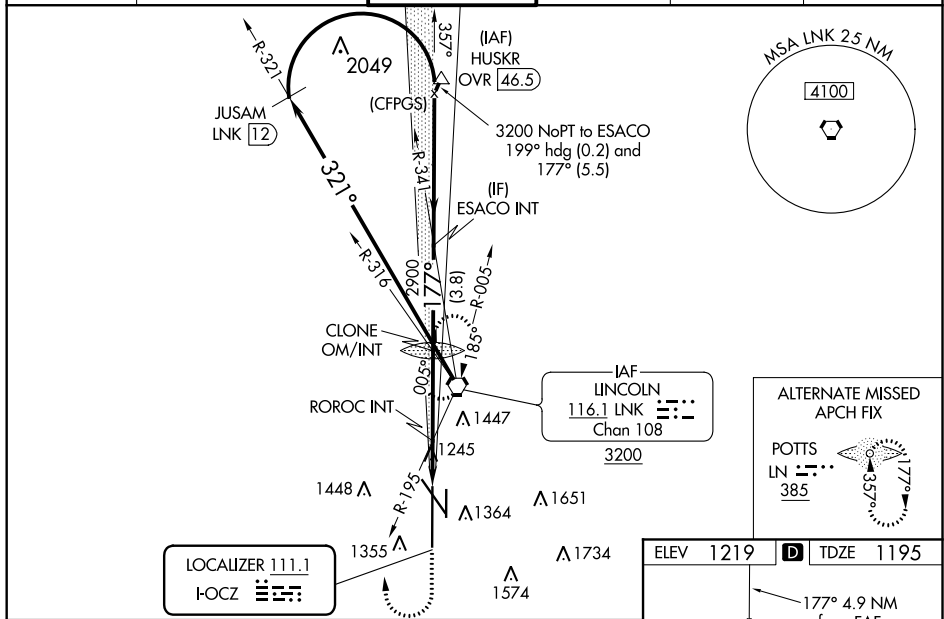
ILS or LOC RWY 18  
LINCOLN (LNK)

**⚠** When local altimeter setting not received use Beatec altimeter setting and increase all DA 91 feet and all MDA 100 feet, increase S-LOC 18 Cat C/D/E visibility to 1½, Circling Cat C visibility to 2 and Cat D visibility to 2¼; increase RORCF fix minimums S-LOC 18 Cat C/D/E visibility to 1½, Circling Cat C visibility to 1¾ and Cat D visibility to 2¼. For inop MALSR, increase S-LS 18 Cat E visibility to RVR 4000, S-LOC 18 Cat E visibility to 1¾, and RORCF fix minimums S-LOC 18 Cat E visibility to 1½. For inop MALSR when using Beatec altimeter setting, increase S-LS 18 all Cats visibility to RVR 4500, S-LOC 18 Cat E visibility to 2, and RORCF fix minimums S-LOC 18 Cat C visibility to 1¾. Cat D and E Straight-in minimums NA when using Beatec altimeter setting. #RVR 1800 authorized with use of FD or AP or HUD to DA.

MALSR

**MISSED APPROACH:**  
Climb to 1700 then  
climbing right turn to  
3000 direct LNK  
VORTAC and hold.

ATIS	OMAHA APP CON	LINCOLN TOWER ★	GND CON	CLNC DEL	UNICOM
118.05 290.9	124.0 270.3	118.5 (CTAF) 253.5	121.9 275.8	120.7 225.4	122.95



**Figure 1: Sample RNAV (RNP) approach chart for S-ILS 18R at KLAS.**

**Chart Elements:**

- Altitudes:** 1700, 3000, 3200, 2837, 2900, 2040-3.
- Distances:** 1.7 NM, 3.2 NM, 3.8 NM.
- Angles:** 321°, 177°.
- Navigation Aids:** LNK VORTAC, LNK, JUSAM LNK, ROROC INT, ESACO INT, Teardrop Right Turn.
- Notes:** \*1880 when using Beatrice altimeter setting. \*LOC only.
- GS 3.00° TCH 55'**

CATEGORY	A	B	C	D	E
S-ILS 18#	1395/24 200 (200-½)				
S-LOC 18	1780/24	585 (600-½)	1780-1¼ 585 (600-1¼)		
CIRCLING	1780-1	561 (600-1)	1780-1¾ 561 (600-1¾)	1820-2 601 (700-2)	2040-3 821 (900-3)

**ROROC FIX MINIMUMS (DUAL VOR RECEIVERS REQUIRED)**

S-LOC 18	1720/24	525 (600-½)	1720/55 525 (600-1)		
CIRCLING	1720-1 501 (600-1)	1760-1 541 (600-1)	1760-1½ 541 (600-1½)	1820-2 601 (700-2)	2040-3 821 (900-3)

