

WAAS
CH 50434
W12A

APP CRS
120°

Rwy Idg
8000
TDZE 2777
Apt Elev 2777

RNAV (GPS) RWY 12

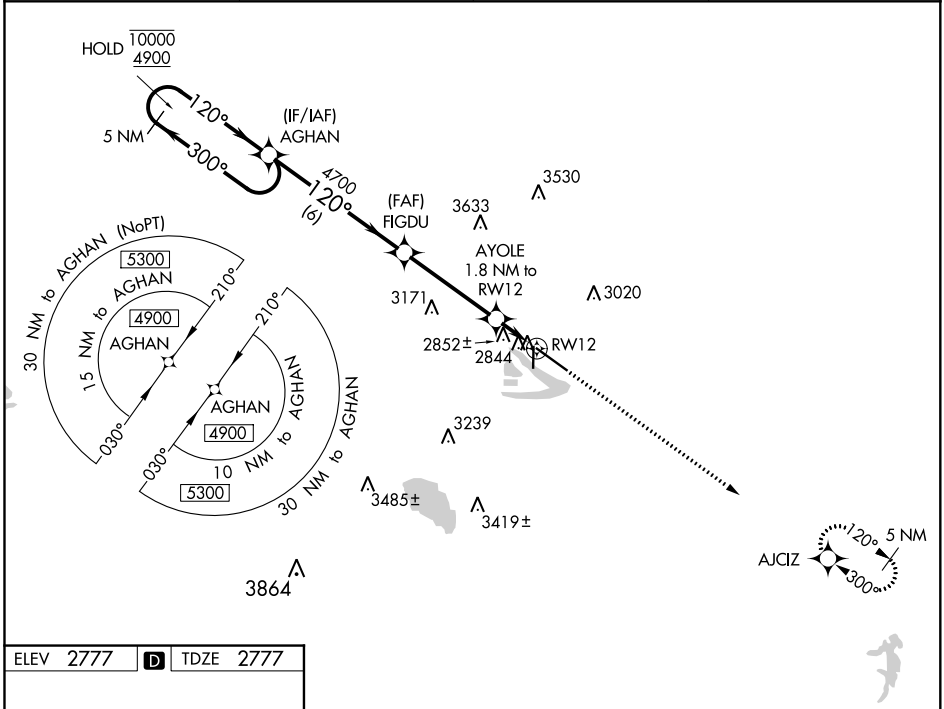
NORTH PLATTE RGNL AIRPORT LEE BIRD FIELD (LBF)

RNP APCH

For uncompensated Baro-VNAV systems, LNAV/VNAV NA below -23°C or above 52°C.

MISSED APPROACH: Climb to 4700 direct AJCIZ and hold.

ASOS 118.425	DENVER CENTER 132.7 226.675	CLNC DEL 132.7	UNICOM 123.0 (CTAF) 0
-----------------	--------------------------------	-------------------	--------------------------



ELEV 2777

D

TDZE 2777

120° to RW12

2840

4436 X 100

35

8001 X 150

35

AS

HIRL Rwy 12-30 0

REIL Rwy 35 0

MIRL Rwy 17-35 0

5 NM Holding Pattern		AGHAN	FIGDU	AYOLE 1.8 NM to RW12	4700 ↑	AJCIZ ✦
10000 ← 300° 4900 120° →			4700		*LNAV only	
GP 3.00° TCH 55			4700	*0.9 NM to RW12	RW12	
		6 NM	4.1 NM	0.9 NM	0.9 NM	
CATEGORY	A	B	C	D		
LPV DA	2977- ³ / ₄ 200 (200- ³ / ₄)					
LNAV/ VNAV DA	3027- ³ / ₄ 250 (300- ³ / ₄)					
LNAV MDA	3120-1 343 (400-1)					
CIRCLING	3280-1 503 (600-1)	3320-1 543 (600-1)	3420-1 ³ / ₄ 643 (700-1 ³ / ₄)	3560-2 ¹ / ₂ 783 (800-2 ¹ / ₂)		