

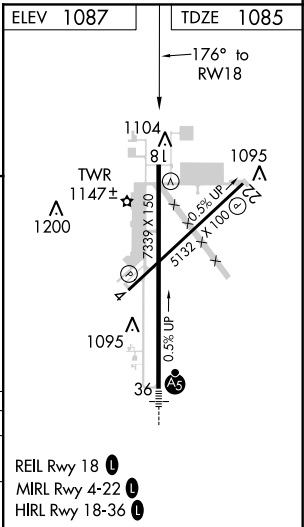
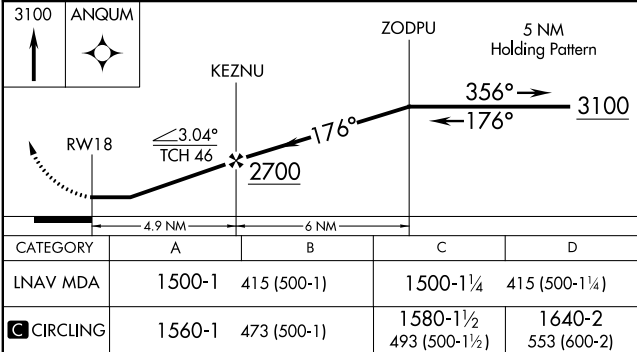
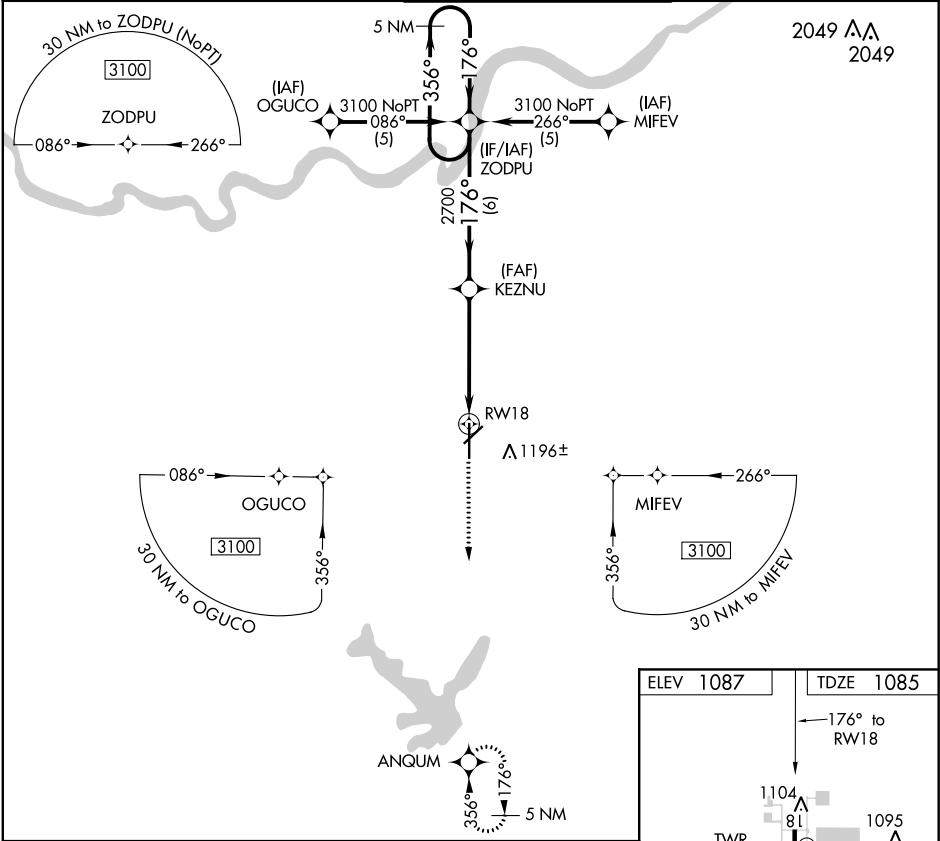
APP CRS	Rwy Idg	7339
176°	TDZE	1085
	Apt Elev	1087

RNAV (GPS) RWY 18

NEW CENTURY AIRCENTER (IXD)

<div><div>T</div><div>A</div></div> <div>DME/DME RNP-0.3 NA. If local altimeter setting not received, use Johnson County Executive altimeter setting and increase all MDAs 20 feet.</div>	MISSED APPROACH: Climb to 3100 direct ANQUM and hold.
---	---

ASOS 135.325	KANSAS CITY APP CON 118.9 251.075	NEW CENTURY TOWER ★ 133.0 (CTAF) 0	GND CON 124.3	UNICOM 122.95
-----------------	--------------------------------------	---------------------------------------	------------------	------------------



NC-2, 03 DEC 2020 to 31 DEC 2020

NC-2, 03 DEC 2020 to 31 DEC 2020