

WAAS
CH **53306**
W30A

APP CRS
306°

Rwy Idg **8279**
TDZE **3952**
Apt Elev **3967**

RNAV (GPS) RWY 30

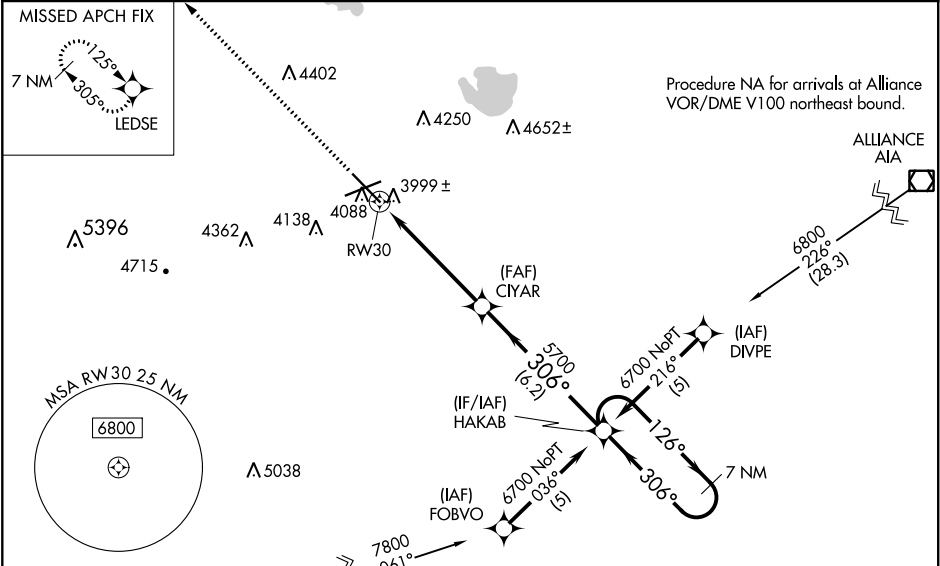
WESTERN NEBRASKA RGNL/WILLIAM B HEILIG FIELD (BTF)

When local altimeter setting not received, use Alliance altimeter setting: increase LPV DA to 4293 feet and visibility ¼ SM; increase LNAV/VNAV DA to 4392 feet and visibility ¼ SM; increase all MDAs 100 feet and visibility Cats C and D ½ SM. For inoperative MALSR, when using alliance altimeter setting, increase LPV all Cats visibility to 1¼. For uncompensated Baro-VNAV systems, LNAV/VNAV NA below -22°C (-7°F) or above 41°C (105°F). Baro-VNAV NA when using Alliance altimeter setting. VDP NA when using Alliance altimeter setting. DME/DME RNP-0.3 NA.

MALSR

MISSED APPROACH: Climb to 6900 direct LEDSE and hold.

ASOS 121.025	DENVER CENTER 127.95 338.2	UNICOM 123.0 (CTAF) 1
------------------------	--------------------------------------	---------------------------------



ELEV 3967

D

TDZE 3952

6900

LEDSE

* LNAV only

* 1.2 NM to RW30

HAKAB

7 NM Holding Pattern

126°

306°

6700

GP 3.00°

TCH 53

CATEGORY	A	B	C	D
LPV DA	4202-½ 250 (300-½)			
LNAV/VNAV DA	4301-¾ 349 (400-¾)			
LNAV MDA	4380-½ 428 (500-½)	4380-¾ 428 (500-¾)	4380-1 428 (500-1)	
CIRCLING	4500-1 533 (600-1)	4560-1½ 593 (600-1½)	4740-2½ 773 (800-2½)	