

WAAS CH <b>93506</b> <b>W05A</b>	APP CRS <b>061°</b>	Rwy Idg <b>8002</b> TDZE <b>3952</b> Apt Elev <b>3967</b>
--	------------------------	---

RNAV (GPS) RWY 5

WESTERN NEBRASKA RGNL/WILLIAM B HEILIG FIELD (BFF)

RNP APCH.

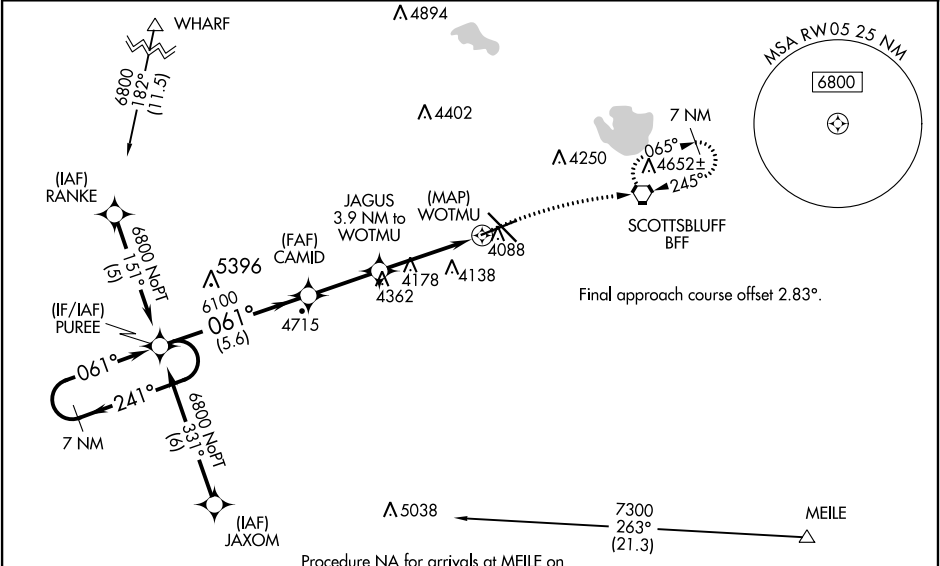
▼

▲

Baro-VNAV NA when using Alliance altimeter setting. For uncompensated Baro-VNAV systems, LNAV/VNAV NA below -22°C (-7°F) or above 51°C (124°F). When local altimeter setting not received, use Alliance altimeter setting and increase all DA 91 feet and all MDA 100 feet; increase LPV all Cats visibility ⅓ mile, LNAV/VNAV all Cats visibility ¼ mile, LNAV Cats C/D visibility ¼ mile, Circling Cat C visibility ½ mile and Cat D visibility ¼ mile.

MISSED APPROACH:  
Climb to 4400 then climbing right turn to 6900 direct BFF VORTAC and hold, continue climb-in-hold to 6900.

ASOS <b>121.025</b>	DENVER CENTER <b>127.95 338.2</b>	UNICOM <b>123.0 (CTAF) 0</b>
------------------------	--------------------------------------	---------------------------------



ELEV 3967

TDZE 3952

7 NM Holding Pattern	PUREE	CAMID	JAGUS 3.9 NM to WOTMU	WOTMU
6800 ← 241°	6800 → 061°	6100	6100	4400 6900 BFF
GP 3.00° TCH 50			*5240	*LNAV only
	5.6 NM	2.7 NM	3.9 NM	
CATEGORY	A	B	C	D
LPV DA		4202-1	250 (300-1)	
LNAV/VNAV DA		4418-1½	466 (500-1½)	
LNAV MDA	4480-1	528 (600-1)	4480-1½	528 (600-1½)
CIRCLING	4500-1	533 (600-1)	4560-1½ 593 (600-1½)	4720-2½ 753 (800-2½)

HIRL Rwy 12-30

MIRL Rwy 5-23