

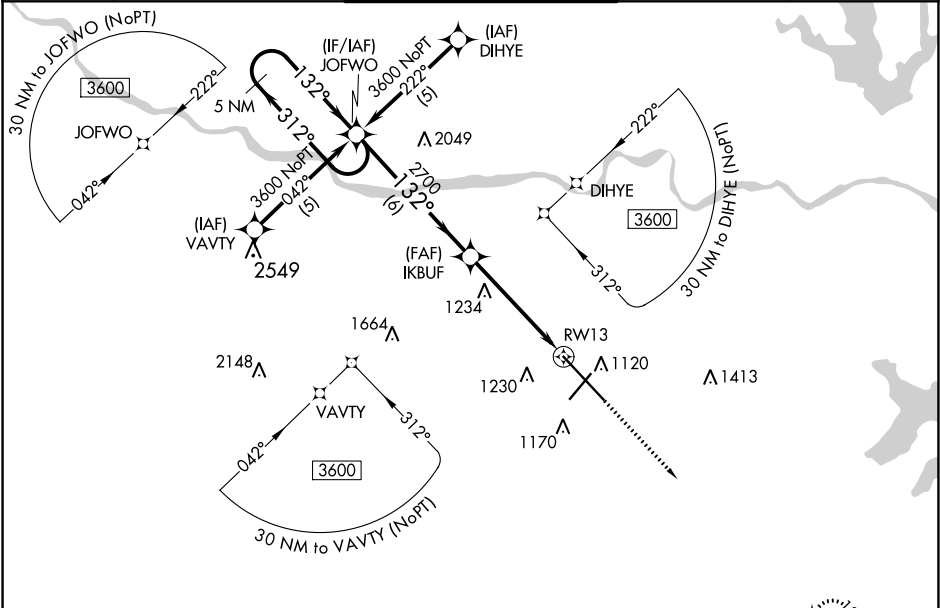
WAAS CH <b>66100</b> <b>W13A</b>	APP CRS <b>132°</b>	Rwy Idg <b>12803</b> TDZE <b>1066</b> Apt Elev <b>1078</b>
--	------------------------	--

RNAV (GPS) RWY 13

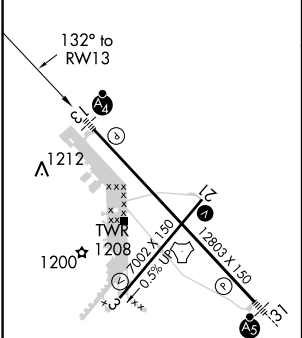
TOPEKA RGNL (F/OE)

RNP APCH	MALSF	MISSED APPROACH: Climb to 3000 direct ERJAG and hold.
<div><div>▼</div><div>▲</div></div> <div>When local altimeter setting not received, use Philip Billard Muni altimeter setting and increase all DA/MDA 60 feet, increase LPV all Cals visibility 1/8 SM, LNAV Cat C visibility 1/8 SM and Circling Cat D visibility 1/4 SM. Baro-VNAV and VDP NA when using Philip Billard Muni altimeter setting. For uncompensated Baro-VNAV systems, LNAV/VNAV NA below -17°C or above 54°C.</div>	<div><div>☐</div><div>☐</div></div>	

ATIS <b>128.25</b>	KANSAS CITY CENTER <b>123.8 343.7</b>	FORBES TOWER★ <b>120.8 (CTAF) 0 340.2</b>	GND CON <b>118.425 275.8</b>	UNICOM <b>122.95</b>
-----------------------	--	--	---------------------------------	-------------------------



ELEV 1078	<b>D</b>	TDZE 1066
-----------	----------	-----------



REIL Rwy 3, 13 and 21  
MIRL Rwy 3-21 **1**  
HIRL Rwy 13-31 **1**

5 NM Holding Pattern				
JOFWO				
3600 ← 312° → 132°				
GP 3.00° TCH 52				
IKBUF				
2700				
*1.3 NM to RWY 13				
RWY 13				
*LNAV only.				
CATEGORY	A	B	C	D
LPV DA	1316-3/4 250 (300-3/4)			
LNAV/VNAV DA	1506-1 1/2 440 (500-1 1/2)			
LNAV MDA	1540-1	474 (500-1)	1540-1 3/8 474 (500-1 3/8)	1540-1 1/2 474 (500-1 1/2)
<b>C</b> CIRCLING	1540-1 462 (500-1)	1580-1 502 (600-1)	1580-1 1/2 502 (600-1 1/2)	1700-2 622 (700-2)