



WICHITA, KANSAS

ILS or LOC RWY 1L

WICHITA, KANSAS			1L	1R
LOC I-IAB <u>111.1</u>	APCH CRS 008°	Rwy Idg	12,000	12,007
		TDZE	1347	1347
		Arpt Elev	1372	

AL-453 (USAF)

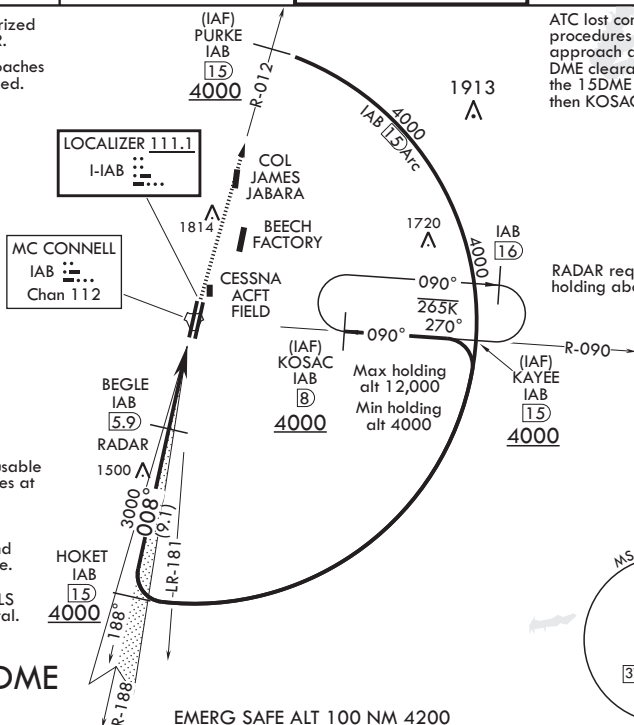
MC CONNELL AFB (KIAB)

▼	<p>* When ALS inop, increase RVR to 40 and vis to 3/4 mile.</p> <p>** When ALS inop, increase RVR to 55 and vis to 1 mile.</p> <p>*** When ALS inop, increase CAT AB RVR to 55 and vis to 1 mile, CAT CDE RVR to 60 and vis to 1 1/8.</p>	<div>Rwy 1L ALSF-1</div> 	<div>Rwy 1R SSALR</div> 	<p>MISSED APPROACH: Climb to 4000 via IAB TACAN R-012 to 15 DME (PURKE). Expect further clearance from ATC.</p>
---	---	--	---	---

D ATIS 124.65 269.9	WICHITA APP CON 134.8 269.1	TOWER 127.25 291.775	GND CON 118.0 275.8
------------------------	--------------------------------	-------------------------	------------------------

**** Circling not authorized
W of Rwy 1L-19R.
Practice circling approaches
NE of IAB not authorized.

ATC lost communication procedures on missed approach as follows: At 15 DME clearance limit fix fly the 15DME Arc to KAYEE then KOSAC and hold.



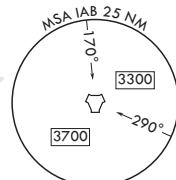
Rwy 1L glideslope unusable
for coupled approaches at
or below 1533' MSL.

CAUTION: LOC front
course unusable beyond
25° left/right of course.

CAUTION: VGSI and ILS
TCH are not coincidental.

**RADAR or DME
REQUIRED**

EMERG SAFE ALT 100 NM 4200



CATEGORY	A	B	C	D	E
S-ILS 1L*	1547/24	200	(200-1/2)		
S-LOC 1L**	1700/24 353 (400-1/2)	1700/35 353 (400-5/8)			
SIDESTEP 1R***	1720/40	373	(400-3/4)		

FAF to MAP 4.5 NM					
Knots	60	90	120	150	180
Min-Sec	4:30	3:00	2:15	1:48	1:30

WICHITA, KANSAS

37°37'N - 97°16'W

MC CONNELL AFB (KIAB)

Amdt 5 10SEP20

ILS or LOC RWY 1L