

WICHITA, KANSAS

RNAV (GPS) RWY 1R

APCH CRS	Rwy Idg	12,007
005°	TDZE	1347
	Arpt Elev	1372

AL-453 (USAF)

MC CONNELL AFB (KIAB)

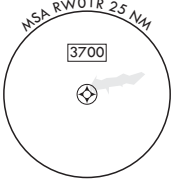
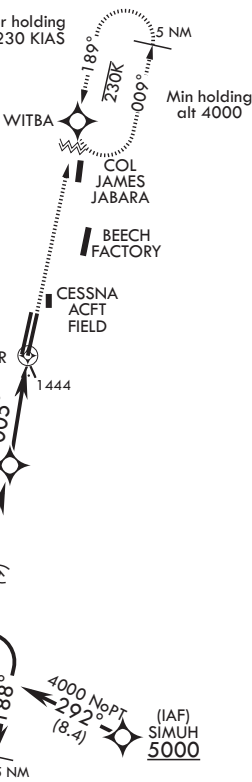
<p>▼ * When ALS inop, increase CAT AB RVR to 55, vis to 1 mile; CAT CDE RVR to 60, vis to 1 1/8 miles; ** Circling not authorized west of Rwy 1L-19R.</p>	<p>SSALR</p> 	<p>MISSED APPROACH: Climbing right turn to 4000 direct WITBA and hold.</p>
---	--	--

D ATIS 124.65 269.9	WICHITA APP CON 134.8 269.1	TOWER 127.25 291.775	GND CON 118.0 275.8
------------------------	--------------------------------	-------------------------	------------------------

DME/DME RNP -0.3 NA

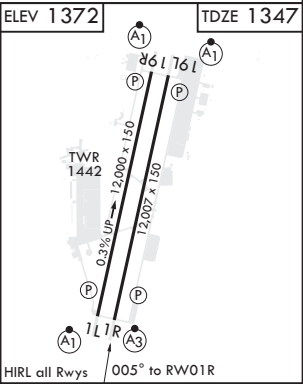
RADAR required for holding
abv 5000 or abv 230 KIAS

1562



EMERG SAFE ALT 100 NM 4100

--	--	--	--	--



WICHITA, KANSAS

37°37'N - 97°16'W

MC CONNELL AFB (KIAB)

Amtdr 4 10SEP20

RNAV (GPS) RWY 1R