

WICHITA, KANSAS

TACAN RWY 19R

TACAN IAB Chan 112	APCH CRS 186°	Rwy Idg 12,000 TDZE 1372 Arpt Elev 1372	AL-453 [USAF]	TACAN RWY 17R MC CONNELL AFB (KIAB)
-----------------------	------------------	-----------------------------------------------	---------------	----------------------------------------

T * When ALS inop, increase CAT AB RVR to 55 and vis to 1 mile, CAT CDE vis to 1 3/8 miles.

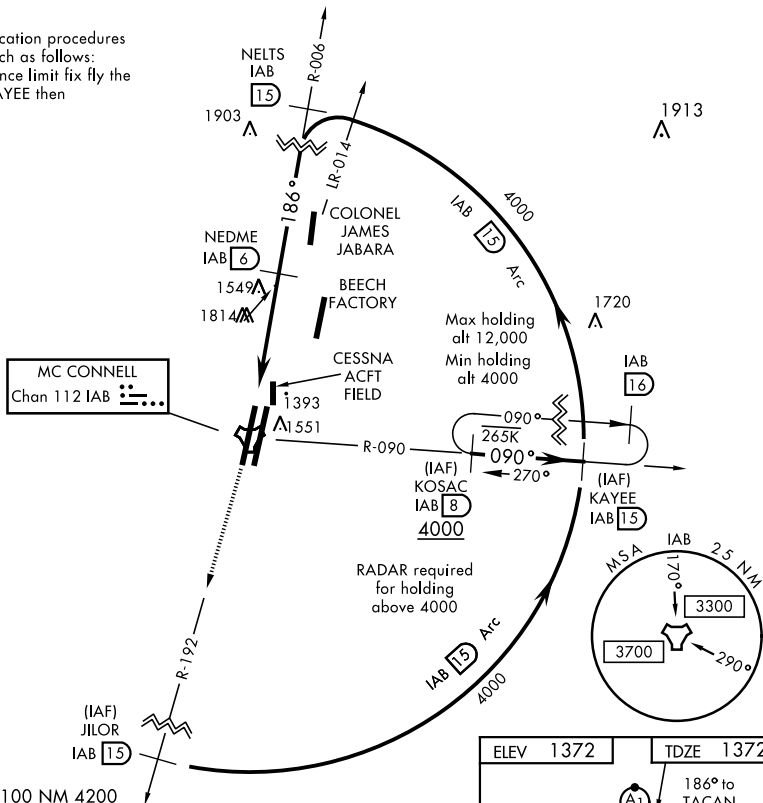
** Circling not authorized W of Rwy 1L-19R.

ALSF-1

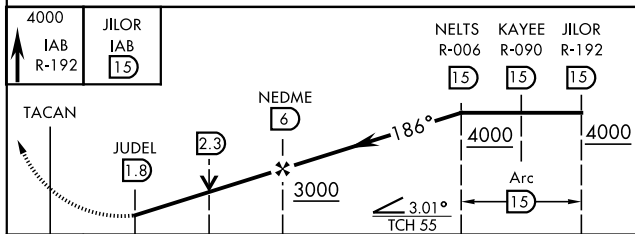
MISSED APPROACH: Climb to 4000 via IAB TACAN R-192 to 15 DME (JILOR). Expect further clearance from ATC.


D-ATIS 124.65 269.9	WICHITA APP CON 134.8 269.1	MC CONNELL TOWER 127.25 291.775	GND CON 118.0 275.8
------------------------	--------------------------------	------------------------------------	------------------------

ATC lost communication procedures on missed approach as follows:
At 15 DME clearance limit fix fly the 15 DME Arc to KAYEE then KOSAC and hold.



EMERG SAFE ALT 100 NM 4200



CATEGORY	A	B	C	D	E
S-19R *	1820/24 448 (500-½)		1820/45 448 (500-¾)		
 CIRCLING **	1900-1 528 (600-1)		1900-1½ 528 (600-1½)	2400-3 1028 (1100-3)	

WICHITA, KANSAS

37°37'N-97°16'W

MC CONNELL AFB (KIAB)

Amdt 5 10SEP20

TACAN RWY 19R

NC-2, 03 DEC 2020 to 31 DEC 2020