

WICHITA, KANSAS

TACAN RWY 1R

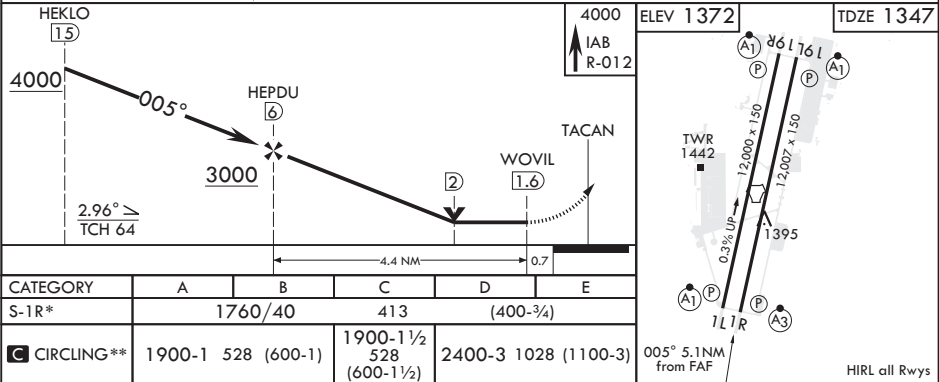
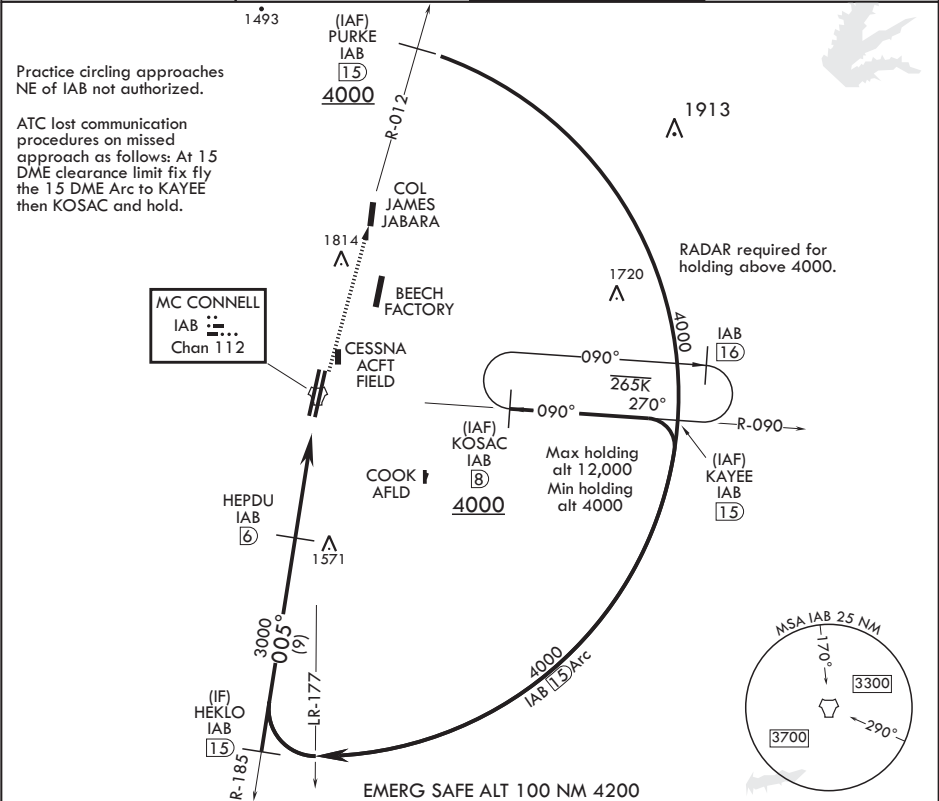
TACAN IAB Chan 112	APCH CRS 005°	Rwy Idg TDZE Arpt Elev	12,007 1347 1372
-----------------------	------------------	------------------------------	------------------------

AL-453 (USAF)

MC CONNELL AFB (KIAB)

<p>▼ * When ALS inop, increase CAT AB RVR to 55 and vis to 1 mile, CAT CDE vis to 1 1/4 miles. ** Circling not authorized W of Rwy 1L-19R.</p>	<p>SSALR A3</p>	<p>MISSED APPROACH: Climb to 4000 via IAB TACAN R-012 to PURKE. Expect further clearance from ATC.</p>
--	---------------------	--

D ATIS 124.65 269.9	WICHITA APP CON 134.8 269.1	TOWER 127.25 291.775	GND CON 118.0 275.8
------------------------	--------------------------------	-------------------------	------------------------



WICHITA, KANSAS

37°37'N - 97°16'W

MC CONNELL AFB (KIAB)

Amdt 6 10SEP20

TACAN RWY 1R

NC-2, 03 DEC 2020 to 31 DEC 2020

NC-2, 03 DEC 2020 to 31 DEC 2020