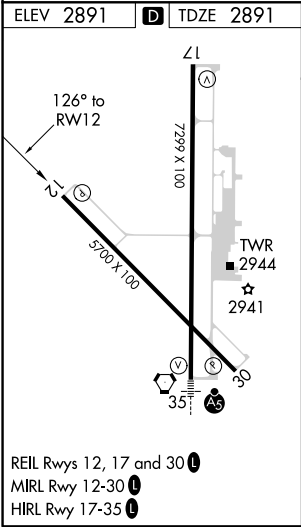
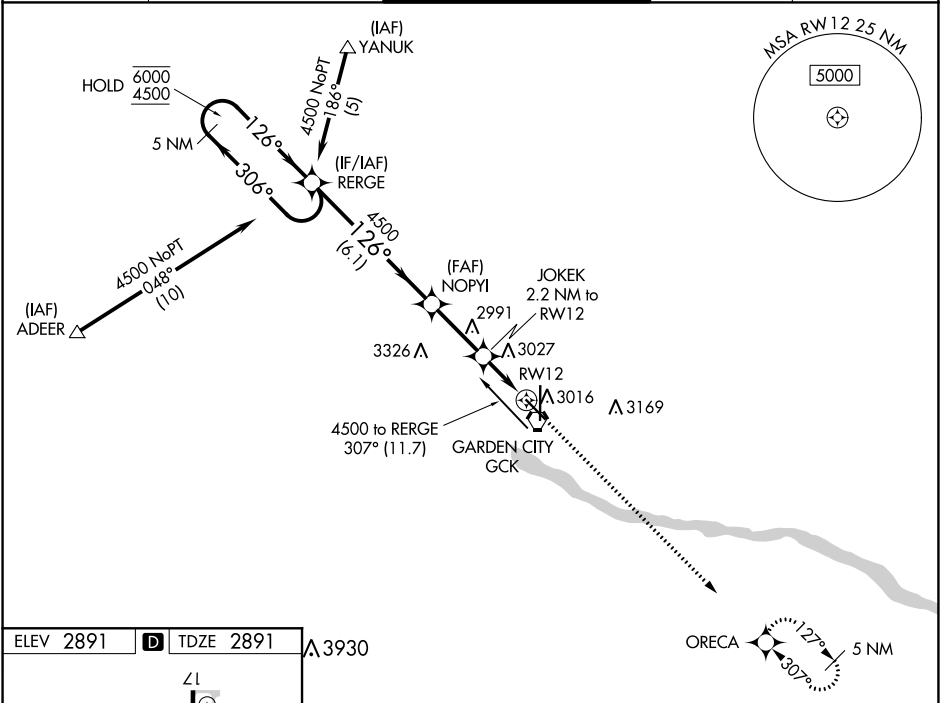


WAAS CH 77803 W12A	APP CRS 126°	Rwy Idg TDZE 2891 Apt Elev 2891
--	------------------------	---

RNAV (GPS) RWY 12
GARDEN CITY RGNL (GCK)

RNP APCH. <div>For uncompensated Baro-VNAV systems, procedure NA below -20°C or above 43°C.</div>		MISSED APPROACH: Climb to 4600 direct ORECA and hold.	
ASOS 121.325	KANSAS CITY CENTER 125.2 269.4	GARDEN CITY TOWER* 118.15 (CTAF) 0 254.4	GND CON 119.0 254.4
		UNICOM 122.95	



ELEV 2891		TDZE 2891	3930	
126° to RW12		7299 X 100	TWR 2944	
5700 X 100		35°	30	
REIL Rwy 12, 17 and 30		MIRL Rwy 12-30	HIRL Rwy 17-35	
GARDEN CITY, KANSAS		Orig-A 05DEC19	37°56'N-100°43'W	
CATEGORY		A	B	C
LPV DA		3141-1	250 (300-1)	
LNAV/VNAV DA		3184-1	293 (300-1)	
LNAV MDA		3280-1	389 (400-1)	3280-1 389 (400-1 1/8)
CIRCLING		3320-1	3360-1	3480-1 3480-2

RNAV (GPS) RWY 12